



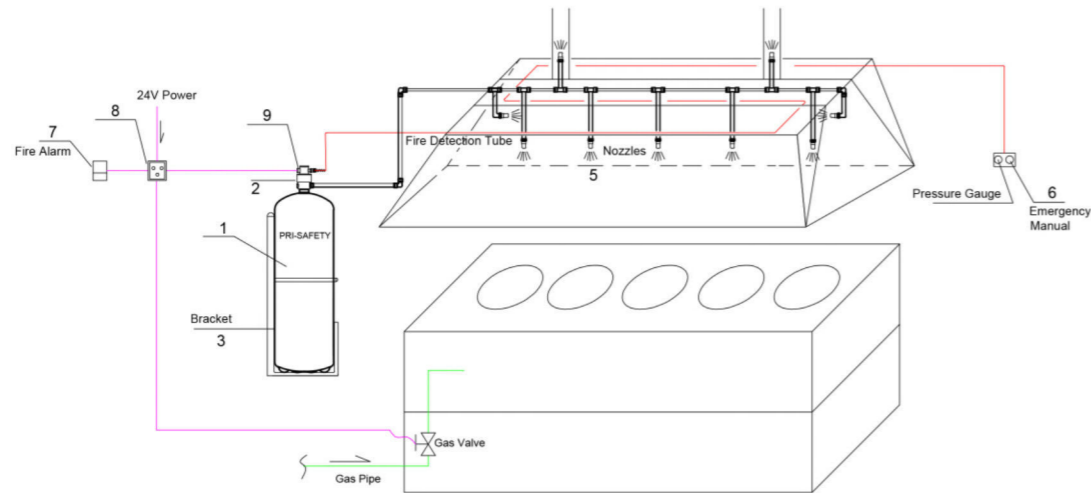
# KITCHEN AUTOMATIC FIRE SUPPRESSION SYSTEMS



## SPECIFICATION

Brand	Capacity	Protect Length / Nozzles / Detection Tube / Discharge pipe	Agent	Working Pressure	Cylinder Material	Activation Temp.
PRI-SAFETY	2L	1m / 3pcs / 3m / 2m	Wet Chemical	14Bar	SS304 ST12	140°C 170°C
	6L	<3m / 8pcs / 12m / 8m				
	9L	<4m / 10pcs / 15m / 12m				
	12L	<5m / 12pcs / 20m / 15m				
	20L	<8m / 18pcs / 30m / 20m				

## APPLICATION



**CERTIFICATE** ISO9001 and CE



# VEHICLE AUTOMATIC FIRE SUPPRESSION SYSTEMS

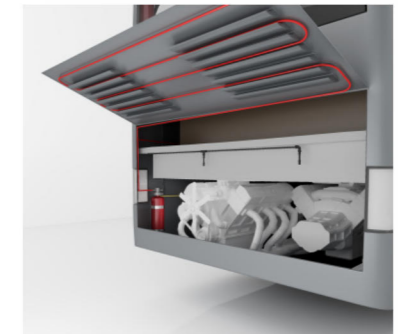
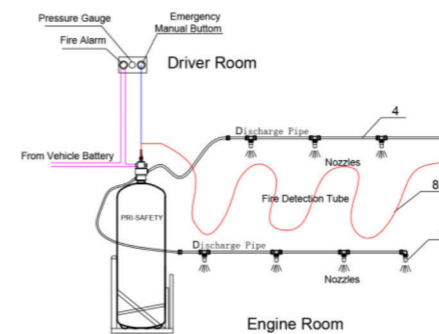


## SPECIFICATION

Brand	Capacity	Agent	Working Pressure	Cylinder Material	Activation Temp.	Shelf life
PRI-SAFETY	6L	Foam	14Bar	SS304 ST12	140°C 170°C	5 years
	9L	FM200				
	12L	Novec1230				
	20L	Dry Powder				
	20L	Dry Powder				

## APPLICATION

› Bus › Truck › Mining Machine › Construction Machine › Boat › Yacht › Train



**CERTIFICATE** CE and ECE R107 Approved



## ELECTRIC EQUIPMENT AUTOMATIC FIRE SYSTEMS

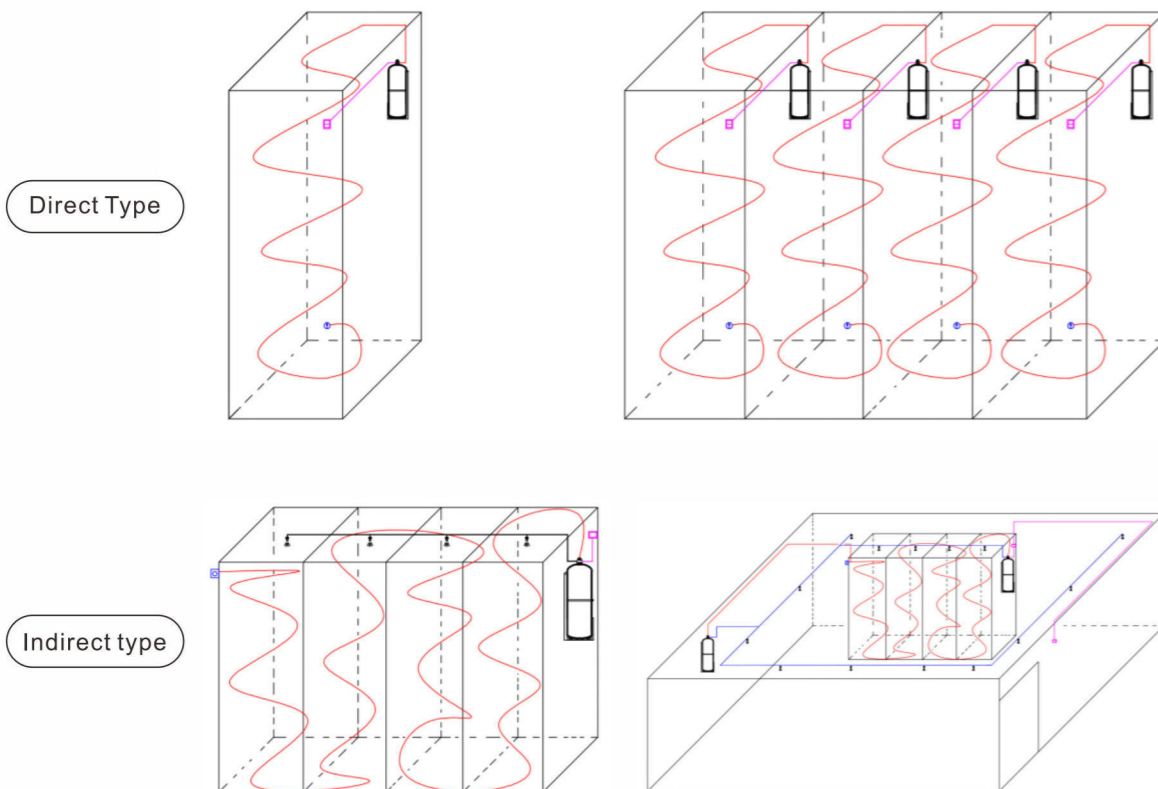


### SPECIFICATION

Brand	Capacity	Type	Agent	Working Pressure	Cylinder Material	Activation Temp.
PRI-SAFETY	1kg	Direct	FM200 Or Novec1230 Or Dry Powder	14Bar	SS304 ST12	140°C 170°C
	2kg	Direct				
	6kg	Indirect				
	9kg	Indirect				
	12kg	Indirect				
25kg	Indirect					

### APPLICATION

➤ Electric Panel ➤ Battery Bay ➤ Control Panel ➤ Electronic Equipment ➤ Server Panel / Room



### CERTIFICATE

ISO9001 and CE



## TUBE TYPE AUTOMATIC FIRE SYSTEMS



### SPECIFICATION

Brand	Length	Agent	Material	Burst Temp.	Shelf life
PRI-SAFETY	0.5m / 1m 2m / 2.5m 3m / 4m 5m / 6m	FM200(HFC-227ea) Or FE-36(HFC-236fa)	Polyamide	100°C 120°C	3~5 years

### PRODUCT ACTIVATED PRINCIPLE

The tube fire suppression systems consist of a heat sensitive tube which is sealed at either end with stainless steel fittings. The tube acts as both the storage medium and as the fire detector. The tube is unaffected by temperatures of up to 120 Degrees Centigrade but fire is of course much hotter and will cause the tube to burst, immediately extinguishing any nearby flames quickly and thoroughly. What's more, this system also can be added pressure switch and alarm system.

### APPLICATION



The tube fire suppression systems are used to protect the enclosed space, including but not limited the below:

- 1) ➤ Engine Compartments of Boats and Yachts.
- 2) ➤ Engine Compartments of All On-Road Vehicles and Off-Road Vehicles: Car, Van, Bus, Mini Bus, Truck, Rally Car, Mining Machine or Construction Machine, etc.
- 3) ➤ Electric Panel, Switch Board, Server Panel, Control Box, etc.

### CERTIFICATE

ISO9001 and CE



## INNOVATIVE THROWING TYPE FIRE EXTINGUISHERS



### SPECIFICATION

Items	Mode	Fire Type	Agent Capacity	Stored Temp.	Fire Agent	Shelf life
Color Egg	TFE-350E	Class A, B, C	350ml	0°C~+60°C	PRI-P10	5 years
350 Fire Vase	TFE-350V	Class A, B, C	350ml	0°C~+60°C	PRI-P10	5 years
600 Fire Vase	TFE-600V	Class A, B, C	600ml	0°C~+60°C	PRI-P10	5 years
Fire Bottle	TFE-600B	Class A, B, C	680ml	0°C~+60°C	PRI-P10	5 years

### USE WAY

PRI-SAFETY throwing fire extinguisher is a special new designed product. It's only need to throw to fire source to extinguish the fire directly. Easy to use by all ages of people, and quickly extinguish initial fire. It also can be used to create the escape route in fire.



1. THROWING TO FIRE ORIGIN



2. LIFE SAVING



3. THROW IT TO CREATE ESCAPE ROUTE

### APPLICATION Decorations and Extinguisher

› Home › Office › Hotel › Cafe › Restaurant › Hospital › Train



### CERTIFICATE ISO9001 and CE



## COOKING PAN STICK TYPE FIRE EXTINGUISHERS



### SPECIFICATION

Brand	Fire Agent	Fire Type	Agent Capacity	Stored Temp.	Fire Rate	Shelf life
PRI-SAFETY	CPE-150	Class K F Class	150g	0°C~+50°C	≤1L cooking oil fire	36 months

### INTRODUCTION

Cooking oil or fat fires can happen for numerous reasons, most commonly as the result of an unattended stove. Trying to extinguish the fire using conventional fire extinguishers or traditional methods can be dangerous. Stick fire extinguisher is a small cooking oil fire extinguisher, specially designed to quell Class F or K (Cooking Oil / Fats) type of fires. It is extremely user friendly, everyone can use it to protect themselves from cooking oil fires. It allows you to extinguish the fire in one simple step; just gently drop stick into the fire.

### USEAGE

1. To be used at the onset of a cooking fire.
2. Carefully place the entire contents (package included) the PRI-SAFETY Fire Fighter Pack into the burning oil/pot. Note: do not throw directly at the stove or burner.
3. Once the fire is extinguished, turn off stove and ventilate the area accordingly.



### APPLICATIONS

- › Kitchen
- › Food Stalls
- › Restaurants
- › Galleys of Aircrafts
- › Trains and Yachts.
- › Cafes, Trains and Yachts.

### CERTIFICATE ISO9001 and CE



## CAFS (COMPRESSED AIR FOAM FIRE SYSTEMS)



### SPECIFICATION

Capacity	Fire Agent	Spray Distance	Size of Fire Hose Reel	Discharge Time	Net Weight (Empty)	Working Pressure
10 Gallons	AFFF3% Foam, ColdFire FireAde2000 Flame Freeze F-500 etc.	14m	1/2"x25m Automatic	150s	76kg	8~10Bar
30 Gallons		23m	1"x25m Automatic	220s	180kg	8~10Bar
60 Gallons		28m	1"x25m Automatic	340s	270kg	8~10Bar
200 Gallons		30m	1-1/2"x25m	20mins	500kg	8~10Bar

### USE WAY

Based on years of fire experiences, CAFS can be as a good choice compared with fire extinguishers or fire vehicles. Common portable fire extinguisher can put out small fires, but in some cases, for example, petrol station fires, building fires, etc. These fires are big and growing fast at the beginning. Common portable fire extinguisher cannot put it out directly. But CAFS is very useful before the arrival of fire vehicles. CAFS can spray around 2 to 10 minutes or longer time to put out the fire. It can put out the fire directly or control fire do not spread. What's more, CAFS operate easily, no need professional fighter, normal personal can operate it.

### APPLICATION

- Airports
- Petrol Station
- Fire Departments
- Factory Warehouse
- Business and Home Owners
- Mini Fire Vehicle and Fire Motorcycle.

**CERTIFICATE** ISO9001 and CE



## FIRE EXTINGUISHERS

### CE AND EN3 FIRE EXTINGUISHER

- Dry Powder
- Water
- Foam
- CO<sub>2</sub>
- Wet Chemical



### UL STANDARD EXTINGUISHER

- CO<sub>2</sub> (Aluminum-Alloy)
- Dry Powder
- Wet Chemical
- Water Mist



### CE STANDARD STAINLESS STEEL EXTINGUISHER

- FOAM
- Dry Powder
- Hanging Type
- Wet Chemical



### ISO STANDARD EXTINGUISHER

- Dry Powder
- Foam
- CO<sub>2</sub>
- Water Mist





## RALLY CAR FIRE SYSTEMS

### MECHANICALLY TYPE RACING CAR FIRE EXTINGUISHER SYSTEMS



#### ● Instruction

Extinguishing system for racing cars, mechanically activated complete with tubing, nozzles and steel bottle. Complete with stainless steel brackets and fixing clamps.

#### ● Specification

<b>Extinguisher Capacity</b>	2.25Ltr , 4.25Ltr, Or Customized Capacity	<ul style="list-style-type: none"> <li>- 1 Bottle With Head Valve And Pressure Gauge</li> <li>- 2 4m Aluminum Tubing</li> <li>- 2 Pull Cables</li> <li>- 2 Fix Bottle Support</li> <li>- 2 Stainless Steel Belt For Bottle</li> <li>- 6 Nozzles</li> <li>- 4 "T" Connections 8 mm</li> <li>- 2 90° Connections Dia. 8 mm</li> <li>- 1 3 Way Connections Dia. 8 mm</li> </ul>
<b>Fire Agent</b>	3% AFFF Foam	
<b>W.P. / T. P.</b>	14Bar / 27Bar	
<b>Cylinder Material</b>	Carbon Steel or Stainless Steel	
<b>Certificate</b>	CE0036 , FIA Standard	

### ELECTRIC TYPE RACING CAR FIRE EXTINGUISHER SYSTEMS



#### ● Instruction

Extinguishing system for racing cars, electric push button activated complete with tubing, nozzles and steel bottle. Complete with stainless steel brackets and fixing clamps.

#### ● Specification

<b>Extinguisher Capacity</b>	2.25Ltr , 4.25Ltr, Or Customized Capacity	<ul style="list-style-type: none"> <li>- 1 Bottle With Head Valve And Pressure Gauge</li> <li>- 2 4m Aluminum Tubing</li> <li>- 2 Fix Support</li> <li>- 2 Stainless Steel Belts For Bottle</li> <li>- 6 Nozzles</li> <li>- 4 "T" Connections 8 mm</li> <li>- 2 90° Connections Dia. 8 mm</li> <li>- 1 3 Way Connections Dia. 8 mm</li> <li>- 1 Battery Box with cable and switch</li> </ul>
<b>Fire Agent</b>	3% AFFF Foam	
<b>W.P. / T. P.</b>	14Bar / 27Bar	
<b>Cylinder Material</b>	Carbon Steel or Stainless Steel	
<b>Certificate</b>	CE0036 , FIA Standard	



## WATER SYSTEMS

### FIRE HOSE



### FIRE HOSE REEL



### FIRE CABINET



### FIRE HYDRANT





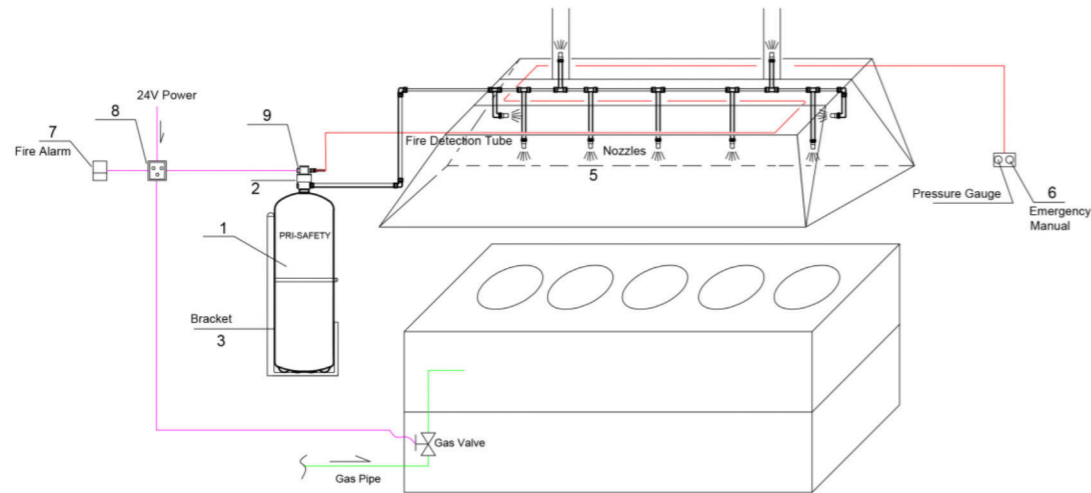
# KITCHEN AUTOMATIC FIRE SUPPRESSION SYSTEMS



## SPECIFICATION

Brand	Capacity	Protect Length / Nozzles / Detection Tube / Discharge pipe	Agent	Working Pressure	Cylinder Material	Activation Temp.
PRI-SAFETY	2L	1m / 3pcs / 3m / 2m	Wet Chemical	14Bar	SS304 ST12	140°C 170°C
	6L	<3m / 8pcs / 12m / 8m				
	9L	<4m / 10pcs / 15m / 12m				
	12L	<5m / 12pcs / 20m / 15m				
	20L	<8m / 18pcs / 30m / 20m				

## APPLICATION



## CERTIFICATE

ISO9001 and CE



# VEHICLE AUTOMATIC FIRE SUPPRESSION SYSTEMS

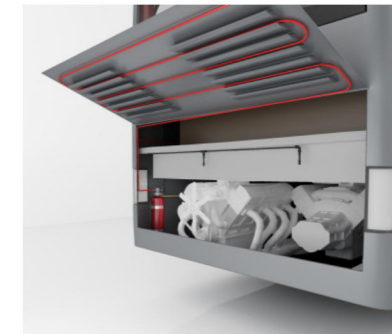
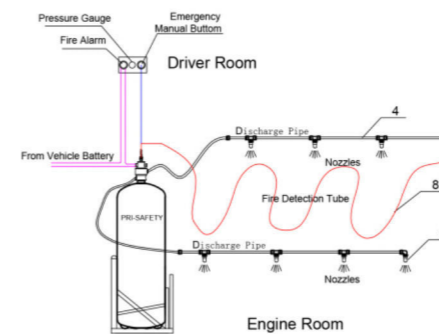


## SPECIFICATION

Brand	Capacity	Agent	Working Pressure	Cylinder Material	Activation Temp.	Shelf life
PRI-SAFETY	6L	Foam	14Bar	SS304 ST12	140°C 170°C	5 years
	9L	FM200				
	12L	Novec1230				
	20L	Dry Powder				

## APPLICATION

› Bus › Truck › Mining Machine › Construction Machine › Boat › Yacht › Train



## CERTIFICATE

CE and ECE R107 Approved



## ELECTRIC EQUIPMENT AUTOMATIC FIRE SYSTEMS

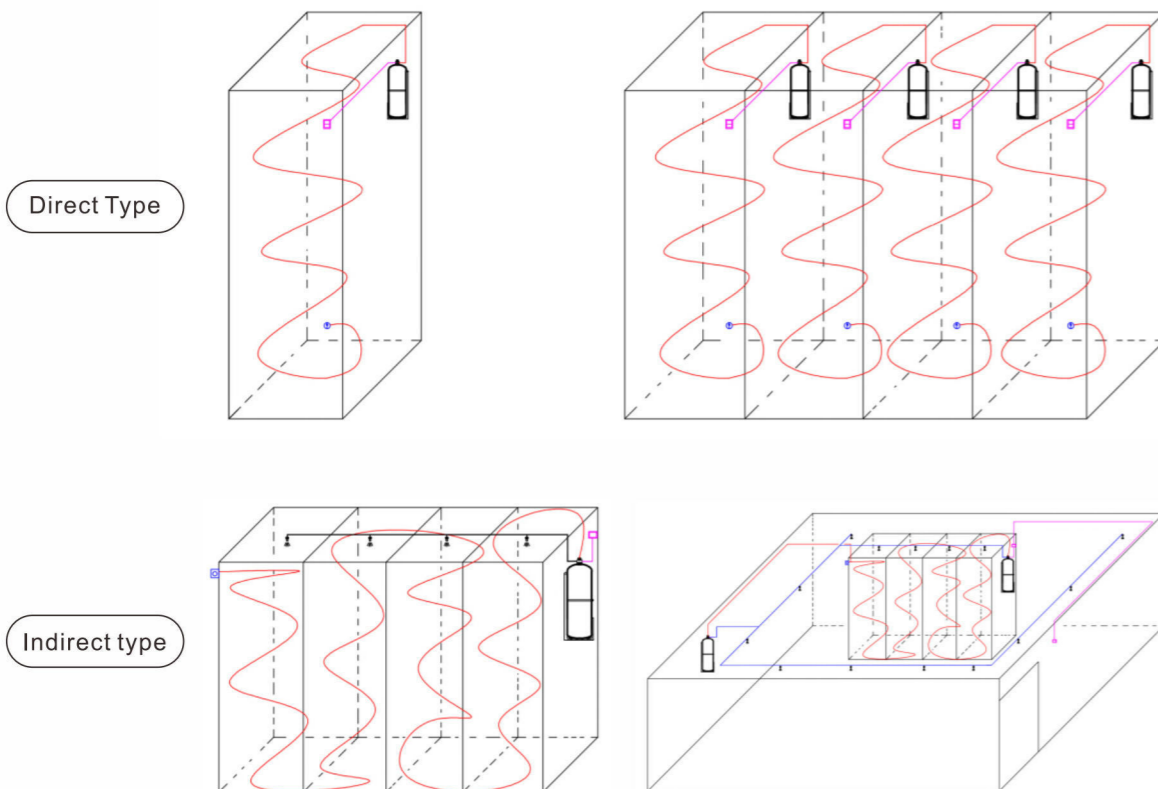


### SPECIFICATION

Brand	Capacity	Type	Agent	Working Pressure	Cylinder Material	Activation Temp.
PRI-SAFETY	1kg	Direct	FM200 Or Novec1230 Or Dry Powder	14Bar	SS304 ST12	140°C 170°C
	2kg	Direct				
	6kg	Indirect				
	9kg	Indirect				
	12kg	Indirect				
25kg	Indirect					

### APPLICATION

➤ Electric Panel ➤ Battery Bay ➤ Control Panel ➤ Electronic Equipment ➤ Server Panel / Room



### CERTIFICATE

ISO9001 and CE



## TUBE TYPE AUTOMATIC FIRE SYSTEMS



### SPECIFICATION

Brand	Length	Agent	Material	Burst Temp.	Shelf life
PRI-SAFETY	0.5m / 1m 2m / 2.5m 3m / 4m 5m / 6m	FM200(HFC-227ea) Or FE-36(HFC-236fa)	Polyamide	100°C 120°C	3~5 years

### PRODUCT ACTIVATED PRINCIPLE

The tube fire suppression systems consist of a heat sensitive tube which is sealed at either end with stainless steel fittings. The tube acts as both the storage medium and as the fire detector. The tube is unaffected by temperatures of up to 120 Degrees Centigrade but fire is of course much hotter and will cause the tube to burst, immediately extinguishing any nearby flames quickly and thoroughly. What's more, this system also can be added pressure switch and alarm system.

### APPLICATION



The tube fire suppression systems are used to protect the enclosed space, including but not limited the below:

- 1) ➤ Engine Compartments of Boats and Yachts.
- 2) ➤ Engine Compartments of All On-Road Vehicles and Off-Road Vehicles: Car, Van, Bus, Mini Bus, Truck, Rally Car, Mining Machine or Construction Machine, etc.
- 3) ➤ Electric Panel, Switch Board, Server Panel, Control Box, etc.

### CERTIFICATE

ISO9001 and CE



## INNOVATIVE THROWING TYPE FIRE EXTINGUISHERS



### SPECIFICATION

Items	Mode	Fire Type	Agent Capacity	Stored Temp.	Fire Agent	Shelf life
Color Egg	TFE-350E	Class A, B, C	350ml	0°C~+60°C	PRI-P10	5 years
350 Fire Vase	TFE-350V	Class A, B, C	350ml	0°C~+60°C	PRI-P10	5 years
600 Fire Vase	TFE-600V	Class A, B, C	600ml	0°C~+60°C	PRI-P10	5 years
Fire Bottle	TFE-600B	Class A, B, C	680ml	0°C~+60°C	PRI-P10	5 years

### USE WAY

PRI-SAFETY throwing fire extinguisher is a special new designed product. It's only need to throw to fire source to extinguish the fire directly. Easy to use by all ages of people, and quickly extinguish initial fire. It also can be used to create the escape route in fire.



1. THROWING TO FIRE ORIGIN



2. LIFE SAVING



3. THROW IT TO CREATE ESCAPE ROUTE

### APPLICATION

Decorations and Extinguisher

› Home › Office › Hotel › Cafe › Restaurant › Hospital › Train



### CERTIFICATE

ISO9001 and CE



## COOKING PAN STICK TYPE FIRE EXTINGUISHERS



### SPECIFICATION

Brand	Fire Agent	Fire Type	Agent Capacity	Stored Temp.	Fire Rate	Shelf life
PRI-SAFETY	CPE-150	Class K F Class	150g	0°C~+50°C	≤1L cooking oil fire	36 months

### INTRODUCTION

Cooking oil or fat fires can happen for numerous reasons, most commonly as the result of an unattended stove. Trying to extinguish the fire using conventional fire extinguishers or traditional methods can be dangerous. Stick fire extinguisher is a small cooking oil fire extinguisher, specially designed to quell Class F or K (Cooking Oil / Fats) type of fires. It is extremely user friendly, everyone can use it to protect themselves from cooking oil fires. It allows you to extinguish the fire in one simple step; just gently drop stick into the fire.

### USEAGE

1. To be used at the onset of a cooking fire.
2. Carefully place the entire contents (package included) the PRI-SAFETY Fire Fighter Pack into the burning oil/pot. Note: do not throw directly at the stove or burner.
3. Once the fire is extinguished, turn off stove and ventilate the area accordingly.



### APPLICATIONS

- › Kitchen
- › Food Stalls
- › Restaurants
- › Galleys of Aircrafts
- › Trains and Yachts.
- › Cafes, Trains and Yachts.

### CERTIFICATE

ISO9001 and CE





## CAFS(COMPRESSED AIR FOAM FIRE SYSTEMS)



### SPECIFICATION

Capacity	Fire Agent	Spray Distance	Size of Fire Hose Reel	Discharge Time	Net Weight (Empty)	Working Pressure
10 Gallons	AFFF3% Foam, ColdFire FireAde2000 Flame Freeze F-500 etc.	14m	1/2"x25m Automatic	150s	76kg	8~10Bar
30 Gallons		23m	1"x25m Automatic	220s	180kg	8~10Bar
60 Gallons		28m	1"x25m Automatic	340s	270kg	8~10Bar
200 Gallons		30m	1-1/2"x25m	20mins	500kg	8~10Bar

### USE WAY

Based on years of fire experiences, CAFS can be as a good choice compared with fire extinguishers or fire vehicles.  
Common portable fire extinguisher can put out small fires, but in some cases, for example, petrol station fires, building fires, etc. These fires are big and growing fast at the beginning. Common portable fire extinguisher cannot put it out directly. But CAFS is very useful before the arrival of fire vehicles. CAFS can spray around 2 to 10 minutes or longer time to put out the fire. It can put out the fire directly or control fire do not spread. What's more, CAFS operate easily, no need professional fighter, normal personal can operate it.

### APPLICATION

- Airports
- Petrol Station
- Fire Departments
- Factory Warehouse
- Business and Home Owners
- Mini Fire Vehicle and Fire Motorcycle.

### CERTIFICATE

ISO9001 and CE



## FIRE EXTINGUISHERS

### CE AND EN3 FIRE EXTINGUISHER

- Dry Powder
- Water
- Foam
- CO<sub>2</sub>
- Wet Chemical



### UL STANDARD EXTINGUISHER

- CO<sub>2</sub> (Aluminum-Alloy)
- Dry Powder
- Wet Chemical
- Water Mist



### CE STANDARD STAINLESS STEEL EXTINGUISHER

- FOAM
- Dry Powder
- Hanging Type
- Wet Chemical



### ISO STANDARD EXTINGUISHER

- Dry Powder
- Foam
- CO<sub>2</sub>
- Water Mist





## RALLY CAR FIRE SYSTEMS

### MECHANICALLY TYPE RACING CAR FIRE EXTINGUISHER SYSTEMS



#### ● Instruction

Extinguishing system for racing cars, mechanically activated complete with tubing, nozzles and steel bottle. Complete with stainless steel brackets and fixing clamps.

#### ● Specification

<b>Extinguisher Capacity</b>	2.25Ltr , 4.25Ltr, Or Customized Capacity	<ul style="list-style-type: none"> <li>- 1 Bottle With Head Valve And Pressure Gauge</li> <li>- 2 4m Aluminum Tubing</li> <li>- 2 Pull Cables</li> <li>- 2 Fix Bottle Support</li> <li>- 2 Stainless Steel Belt For Bottle</li> <li>- 6 Nozzles</li> <li>- 4 "T" Connections 8 mm</li> <li>- 2 90° Connections Dia. 8 mm</li> <li>- 1 3 Way Connections Dia. 8 mm</li> </ul>
<b>Fire Agent</b>	3% AFFF Foam	
<b>W.P. / T. P.</b>	14Bar / 27Bar	
<b>Cylinder Material</b>	Carbon Steel or Stainless Steel	
<b>Certificate</b>	CE0036 , FIA Standard	

### ELECTRIC TYPE RACING CAR FIRE EXTINGUISHER SYSTEMS



#### ● Instruction

Extinguishing system for racing cars, electric push button activated complete with tubing, nozzles and steel bottle. Complete with stainless steel brackets and fixing clamps.

#### ● Specification

<b>Extinguisher Capacity</b>	2.25Ltr , 4.25Ltr, Or Customized Capacity	<ul style="list-style-type: none"> <li>- 1 Bottle With Head Valve And Pressure Gauge</li> <li>- 2 4m Aluminum Tubing</li> <li>- 2 Fix Support</li> <li>- 2 Stainless Steel Belts For Bottle</li> <li>- 6 Nozzles</li> <li>- 4 "T" Connections 8 mm</li> <li>- 2 90° Connections Dia. 8 mm</li> <li>- 1 3 Way Connections Dia. 8 mm</li> <li>- 1 Battery Box with cable and switch</li> </ul>
<b>Fire Agent</b>	3% AFFF Foam	
<b>W.P. / T. P.</b>	14Bar / 27Bar	
<b>Cylinder Material</b>	Carbon Steel or Stainless Steel	
<b>Certificate</b>	CE0036 , FIA Standard	

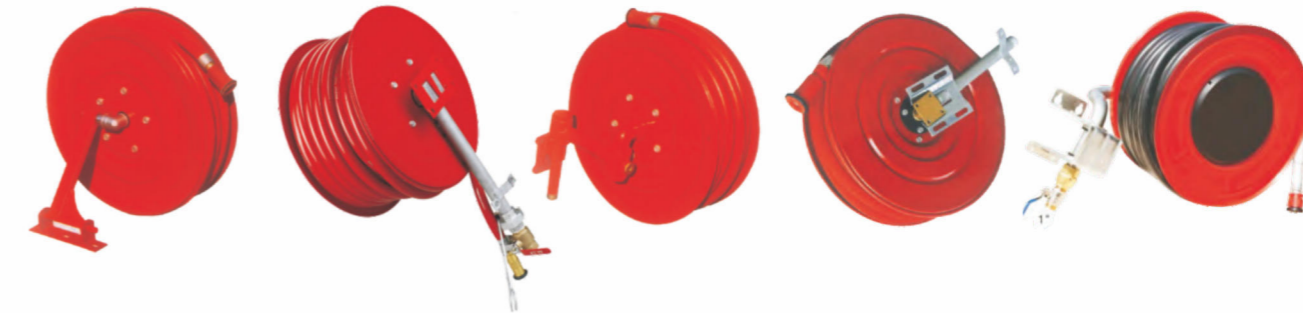


## WATER SYSTEMS

### FIRE HOSE



### FIRE HOSE REEL



### FIRE CABINET



### FIRE HYDRANT

