



sales@tehnipartgroup.com



+356 9912 6346



P.O. Box 6661 Hay Andalus Tripoli Libya



TECHNIPART GROUP

Fire Alarm and Fire Extinguishing Products  
for Life Safety and Property Protection Applications



2022 CATALOGUE



AMBEST

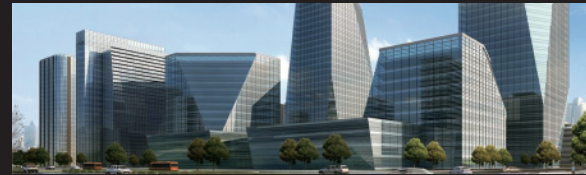
# CONTENTS

## Company Profile

Founded in 2010, Numens specializes in the design and production of fire detection and alarm systems, and fire extinguishing control systems for installation in and around buildings. The extensive fire detection and alarm system product range includes both addressable and non-addressable fire detectors and audio/visual alarm devices. Gaseous fire suppression control systems are offered for critical asset protection applications. Separate to solutions for commercial applications, fire detection requirements for residential applications are satisfied with a broad range of stand-alone and inter-connected alarm devices.

Offering more than 400 products, and providing OEM and ODM services to over 700 customers around the globe, Numens provides customers with products that satisfy installer's and user's rigorous requirements. Match the products with complementary online and offline product training, and you will understand why customers continue to source solutions from Numens. Keeping abreast of industry trends, Numens has a mature and experienced team of development engineers producing robust and cost-effective design solutions to meet contemporary requirements. The skills and performance were recognized in 2020 with certification as a Chinese National High-Tech Enterprise.

As part of a company-wide commitment to continuous improvement in product quality and production efficiency, Numens has experienced senior management personnel and automated production equipment. Automation of 70% of production processes delivers minimal product variation and maximum yield – high testing pass rates, without the need for rework. Customers know that installed equipment works first time, every time.



### Addressable Fire Alarm Systems

Control and Indicating Equipment	3
603 Series Wireless Detectors	7
Wireless Manual Call Points and Alarm Devices	8
Wireless Modules	9
360 Series Detectors and Bases	11
Manual Call Points and Accessories	13
Alarm Devices	14
Modules	15



### Non-Addressable Fire Alarm Systems

Control and Indicating Equipment	21
300/310 Series Detectors and Bases	25
Detectors	27
Manual Call Points	29
Alarm Devices	30



### Gas Extinguishant Control System

Release Panel	18
Accessories	19



### Residential Products

Fire Alarms	31
Fire Alarms and Water Leakage Alarms	34
Gas Alarms	35
Accessories	36



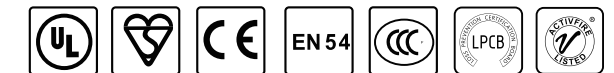
### Detector Test Tools

Detector Remover Tools	37
Detector Test Tools	37



## Approvals

Standards and approvals are important to Numens, giving customers additional confidence about the performance and reliability of the entire product range. The whole Numens development and production processes are certified to ISO 9001:2015. Products carry approvals to major European and North American Standards, with more than 70% holding CE, UL, LPCB, KITEMARK, CSIRO and CCC certification.





Wired Smoke Detector    Wired Heat Detector    Wired Smoke/heat Detector



Wired Audio/Visual Alarms    Wired Manual Call Point



Loop Isolator



# Addressable Fire Alarm System



Wired Devices



Wireless Devices

Wireless Node



Wireless Audio/Visual Alarm    Wireless Manual Call Point



Wireless Smoke Detector    Wireless Heat Detector    Wireless Smoke/heat Detector



GSM Module



Wi-Fi Module



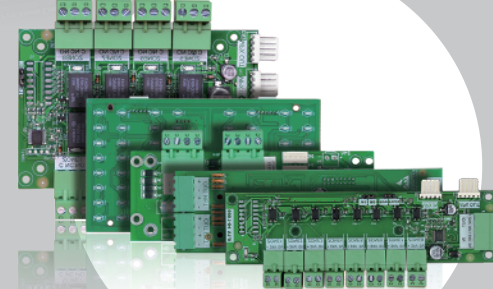
I/O Groups



Repeaters



Graphic Display Software



Comprehensive Interfaces



# Addressable Control and Indicating Equipment



## Description

The 6002/6004 analogue addressable control and indicating equipment forms the central part of a fire detection and alarm system. The 6002/6004 is compatible with Numens addressable devices and supports up to 125 devices per loop. Non-addressable devices can also be connected to them, when used with addressable input modules.

The 6002/6004 addressable control and indicating equipment is networkable and can scale up to a considerable size of 24-loops. Informatization design enables fire detection and alarm system designers to know the host status in real time, fire fault and test conditions can easily be read on a PC in the fire control room when the graphic display software is used. They can also communicate with the mobile phone through the GSM module, which is convenient for designers to know the system status at any time away from the fire alarm system.

Default configuration programming facilitates out-of-box installation and rapid commissioning. A powerful and versatile cause-and-effect PC-based programming tool enables rapid customization with software for sites that require special operating features.

The 6002/6004 control and indicating equipment provides fire detection and alarm system designers with a premium product for life safety and property protection applications.

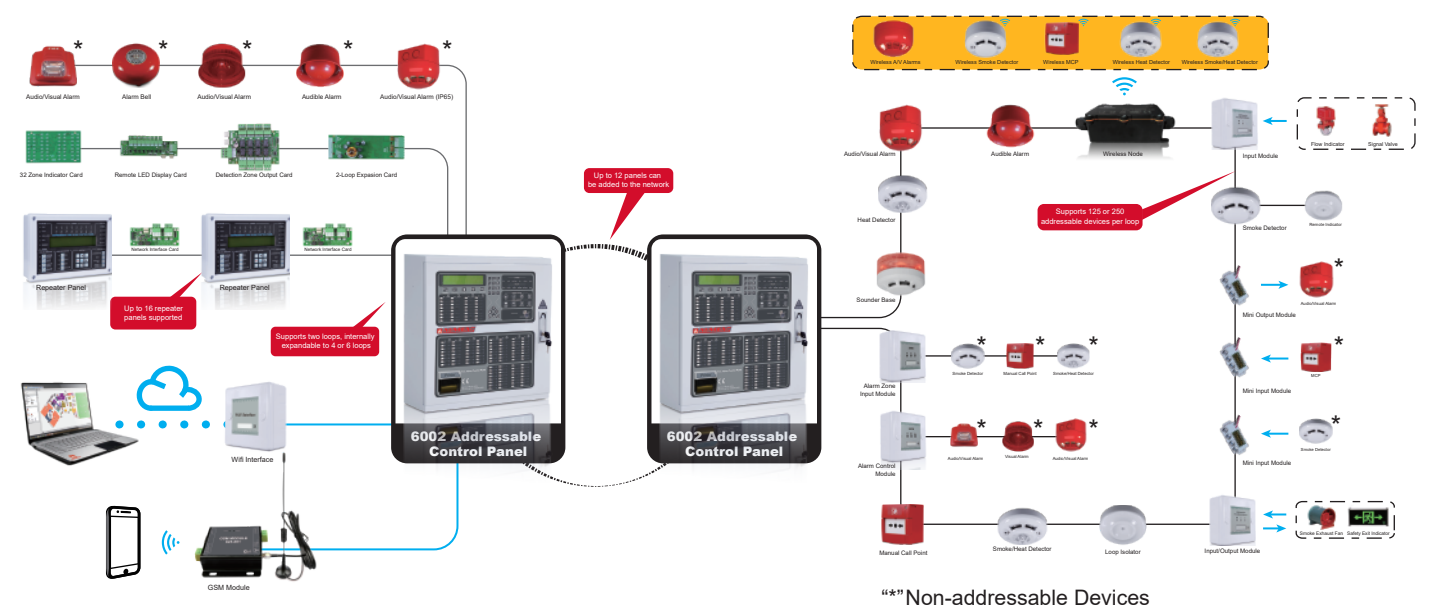
## Features

- Networkable, up to 24-loops
- Graphic display software available
- Supports up to 125 addressable devices per loop
- Wireless detection devices supported
- Automatic device detection on start-up
- Automatic device type-code verification
- 128 configurable zones
- 32 addressable audio/visual alarm devices per loop
- 2 independent programmable non-addressable sounder output circuits
- Manual activation of alarm devices
- Configurable timer to delay Fire Alarm Condition output activation
- 2 programmable unmonitored Fire Alarm Condition relay outputs
- 1 programmable unmonitored Fault Condition relay output
- Supervised auxiliary DC 24 V output
- 4 Access Levels
- Configurable day/night mode
- Backlit LCD display providing 4 rows of 40 characters
- 3000 event history log
- Multiple language support
- Attractive design enclosure available in cream or red
- Surface mounting
- Easy installation
- Supports up to 16 repeater panels

## Ordering Information

Part Number	1 Loop	2 Loop	6 Loop	Cream Enclosure	Red Enclosure	Fire LED
6004-01	✓	—	—	✓	✓	16 zones
6004-02 <sup>a</sup>	✓	✓	—	✓	✓	16 zones
6004-03	—	✓	—	✓	✓	16 zones
6002-01 <sup>b</sup>	—	✓	✓	✓	—	32 zones
6002-11 <sup>b</sup>	—	✓	✓	—	✓	32 zones

<sup>a</sup> Expandable to 2 loops  
<sup>b</sup> Expandable to 6 loops



## 6000-03 Configurator Software



The 6000-series configurator software is used to configure the operation of addressable control and indicating equipment. Easy access is available to all the configurable features. New files can be created, and existing files can be downloaded and backed up. The 6000-series configurator software provides fire detection and alarm system designers with a premium product for life safety and property protection applications.

- Operates on Windows™ PCs
- Supports all configurable functions on 600x control and indicating equipment
- Connects to control panel using RS-232 cable or Wi-Fi
- Advance copy/paste features minimizes repetitive configuration
- Provides significant productive improvements
- Transmit and receive indication
- Easy installation

Ordering Information  
 6000-03

## 6003-01 Graphic Display Software



Numens Graphic software has two parts: Graphic design software and Graphic display software. Numens Graphic Design Software is an engineering design software, which is used to establish the relationship between the alarm device and the floor plan. Numens Graphic Display Software is a fire alarm graphic display and remote control software. After importing the project file produced by Graphic design software, the Graphic display interface will be executed, which is very convenient and easy to operate.

- Two-level drawings pinpoint the location of alarms
- Virtual interface to do simple controls to the CIE remotely
- Configurable sounds to differentiate between fire alarms and fault alarms
- Event log report supported
- Operates on Windows™ PCs
- Supports all 600x control and indicating equipment
- Connects to control panel using RS-232 cable or Wi-Fi
- Transmit and receive indication
- Easy installation

Ordering Information  
 6003-01



## 6002-02 2-loop Expansion Card



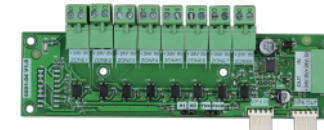
The 6002 loop expansion card provides two additional analogue addressable loops to expand the device capacity of the **6002** control and indicating equipment. Non-addressable devices can also be connected to the 6002 2-loop expansion card, when used with addressable input modules.

The 6002 2-loop expansion card provides fire detection and alarm system designers with the increased device capacity required for medium and larger life safety and property protection applications.

- Two analogue addressable loops
- Supports up to 125 addressable devices per loop
- Supports both Numens SP and TP loop protocols
- Easy installation

Ordering Information  
6002-02

## 6001-04 Remote LED Display Card

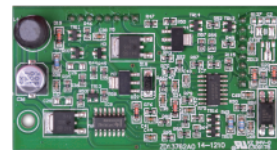


The 6001 remote LED display card is used to repeat the discrete LED indications of Numens control panels. Sixteen discrete LEDs can be configured to display multiple Alarm and Fault conditions, or system status conditions remotely from the control panel.

Ordering Information  
6001-04

- Configurable for 8-zone LED display of Alarm and Fault conditions
- Configurable for 16-zone LED display of Alarm conditions
- Configurable for 16 LED display of system status conditions
- High intensity, low power consumption LEDs

## 6001-06 1-Loop Expansion Card



The 6001 1-loop expansion card is used with the **6004** control panels to add an additional loop, and up to 125 devices to the base panel.

Ordering Information  
6001-06

- Compatible with 6004 control panel
- Supports up to 125 devices
- Easy installation and configuration

## 685-001 Wi-Fi Interface



The 685 Wi-Fi interface provides a wireless transmission path between compatible control and indicating equipment and a wireless local area network (WLAN) access point.

The connection of CIE to the WLAN through the Wi-Fi interface enables wireless connection of authorized PCs to CIE. A dedicated application running on smart phones provides additional monitoring and control through the Internet.

The 685 Wi-Fi interface provides fire detection and alarm system designers with a fully functional interface to configure and monitor the operation of the fire detection and alarm system.

- Connects by Wi-Fi to wireless local area network (WLAN)
- Powered from CIE auxiliary supply
- RS-232 data transmission path to CIE
- Internal antenna
- Surface mounting
- Easy installation

Ordering Information  
685-001

## 6001-03 Network Interface Card



The 6001 network interface card is used to form a ring network of Numens control panels and repeaters. Robust data communications uses separate transmit and receive transmission paths to provide superior reliability. The transmission paths are constantly monitored for fault conditions in the wiring. A single fault will continue to allow network communications.

Ordering Information  
6001-03

- RS-422/RS-485 data communications protocol
- Ring topology
- Monitoring of short and open circuit conditions in the transmission path
- Fault-tolerant transmissions allows continuous data communications with a single fault in the transmission path

## 623-001 GSM Module



The 623 GSM module connects to compatible control and indicating equipment and sends fire detection and alarm system status messages to pre-configured mobile telephone numbers. A standard SIM (not supplied) is required to be installed in the 623, and an antenna is included for connection to the mobile telephone network.

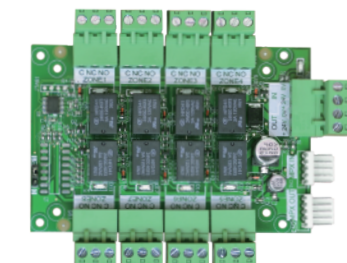
The 623 is powered from a DC 24 V power source available from the CIE.

The 623 GSM module provides fire detection and alarm system designers with an economical and reliable method to transmit CIE status messages to building engineers and others who desire immediate notification of changes in the status of the CIE.

- Compatible with Numens control and indicating equipment
- RS-232 data connection port to CIE
- Reload control, to restore factory settings
- Green LED normal operation indicator
- Red LED power indicator
- Powered from CIE auxiliary DC 24 V supply output
- USB interface for firmware updates
- Easy installation
- Low maintenance

Ordering Information  
623-001

## 6001-07 Detection Zone Output Card



The 6001 detection zone 8-relay output card provides relay output contacts that activate when the associated control and indicating equipment detection zone displays an Alarm Condition. Each 6001 detection zone 8-relay output card provides normally-open and normally-closed voltage-free output contacts.

6001 detection zone 8-relay output cards provide fire detection and alarm system designers with a flexible solution for life safety and property protection applications.

Ordering Information  
6001-07

- Activates relay output contacts when the control and indicating equipment enters the Alarm Condition for the designated detection zone
- Eight assignable voltage-free relay output contacts
- Normally-open and normally-closed relay outputs
- Jumper-configurable to operate with detection zones 1 ~ 8 or 9 ~ 16
- Connects to MPX bus
- Powered from external DC 24 V supply
- Easy installation

## 6001-08 Repeater Panel



The 6001 addressable DC repeater panel extends the **6004** addressable control and indicating equipment display to a remote location. The repeater panel is compatible with all Numens 6004 control panels and can be powered from the existing DC 24 V supply. The repeater panel comes standard with features that allows flexibility and expandability. Default configuration programming facilitates out-of-box installation and rapid commissioning.

- Networkable, up to 4 control panels
- Backlight LCD display providing 4 rows of 40 characters
- 16 zone fire alarm LED indicators
- Attractive design enclosure available in white
- Recessed mounting
- Easy installation

Ordering Information  
6001-08

# 603 Series Wireless Detectors



## Description

603 photoelectric smoke&heat detectors are microprocessor controlled state-of-the-art wireless detectors, suitable for connection to Numens wireless addressable fire detection control and indicating equipment. 603 smoke/heat detectors use a wireless transmission path to connect to a node located on the addressable loop. Up to 125 detectors can be wireless connected to each addressable loop. If the wireless detector is removed from its base, a fault signal will be released to the control and indicating equipment. Advanced electronics in conjunction with a photoelectric smoke sensing chamber provides early detection of fire and high immunity against unwanted alarms. An internal battery provides 10 years of normal operation. The 603 wireless detector range provides fire detection and alarm system designers with a flexible smoke/heat detector for life safety and property protection applications.

## Features

- Wireless transmission path
- Internal antenna
- Photoelectric smoke sensing chamber technology
- Integrated indicator provides visual indication of an alarm condition
- Test button verifies battery and detector operation
- Smoke chamber and heat sensor fault visual indication
- Internal power
- Low battery visual warning indication
- Up to 32 devices can be connected to the wireless node.
- User-replaceable battery provides up to 10 years operation under normal conditions
- Surface-mount device (SMD) circuit board design
- Easy DIP-switch loop and address setting
- Easy installation and configuration
- Low maintenance

## Ordering Information

Part Number	Smoke	Heat
603-001	✓	✓
603-002	✓	—
603-003	—	✓

# 660-006 Wireless Manual Call Point



660 wireless manual call points use a wireless transmission path to connect to Numens addressable fire detection control and indicating equipment via a wireless node. Up to 125 devices can be wireless connected to each addressable loop.

A pressure-activated displacement element provides a safe and convenient way for building occupants to manually initiate a fire alarm condition.

The 660 wireless manual call point has an integral alarm indicator that illuminates when the manual call point has been activated. The indicator can also be configured to flash when polled by the wireless node.

Resetting the manual call point is achieved by inserting a key through the underside of the unit to replace the operating face to the quiescent position.

The 660 manual call point range provides fire detection and alarm system designers with a Standards-compliant, premium product for life safety and property protection applications.

- Wireless transmission path
- Internal antenna
- Pressure activated displacement element provides a safe user experience
- Integral indicator to show polling and alarm activation
- Resettable with simple key operation
- Easy DIP-switch loop and address setting
- Easy to replace lithium battery
- User-replaceable battery provides up to 10 years operation under normal conditions
- Monitors for quiescent, alarm and fault conditions
- Easy installation and configuration
- Low maintenance

## Ordering Information

660-006

# 642 Wireless Audio/Visual Alarms



The 642 wireless audio/visual alarm devices are multi-tonal alarms, suitable for connection to Numens wireless addressable fire detection and alarm systems. Four distinct alarm tones can be selected during installation.

The 642 wireless alarm device is powered by the replaceable lithium batteries. Activation is initiated by the dedicated wireless initiation message from wireless node. Up to 32 devices can be connected to each addressable loop.

The range includes weather-proof models. Designed for compliance with EN 54-3 and EN 54-23 Standards, the 642 range of wireless audio/visual alarm devices provide fire detection and alarm system designers with a premium product for life safety applications.

- Visual, audible and audio/visual models available
- Four distinct alarm tones, selectable with DIP-switch
- Internal antenna
- Activates when a dedicated activation message is received from wireless node
- Loud 90 dB sounder output at 1 m
- Long-life LEDs
- Low quiescent current
- Easy DIP-switch loop/address setting
- Easy to replace lithium battery
- Weather-proof models available
- Low maintenance

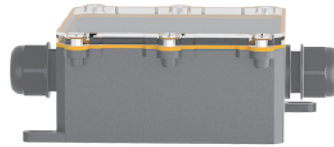
## Ordering Information

Part Number	Weather-proof (IP-65)	Audible Alarm	Visual Alarm
642-001	—	✓	—
642-002	✓	✓	—
642-003	—	—	✓
642-004	✓	—	✓
642-005	—	✓	✓
642-006	✓	✓	✓



## 625-001 Wireless Input/Output Module

IP-65 RF CE



The 625 wireless input/output module is powered by the replaceable lithium batteries. Activation is initiated by a dedicated wireless initiation message from wireless node. Up to 125 modules can be connected to each addressable loop. A parallel resistive input filter allows multiple states to be monitored at the input. The states are transmitted to the wireless node through the wireless communications protocol by the module, to enable them to be displayed on the control and indicating equipment.

The 625 wireless input/output module has the integral status indicators that illuminate when the module has been activated by the wireless node. The 625 wireless input/output module provides fire detection and alarm system designers with a Standards-compliant, premium product for life safety and property protection applications.

- Single voltage-free relay output
- Single input for connection to dry contact inputs
- Monitors and signals three distinct input states
  - Normal
  - Alarm
  - Open-circuit
- Operates when a dedicated activation message is received from wireless node
- Separate indicators for Quiescent, Alarm and Fault conditions
- Surface-mount device (SMD) circuit board design
- Internal antenna
- Easy installation with simple loop/address setting DIP switches
- Weather-proof
- Low maintenance

Ordering Information  
625-001

## 685-002 Wireless Node

IP-65 RF CE



The 685 wireless node range provides fire detection and alarm system designers with a Standards-compliant, premium product for life safety and property protection applications through wireless and hardwired seamless connection. 685 wireless node connects to addressable fire detection control and indicating equipment. Up to 64 nodes can be connected to the expansion loop card.

685 wireless nodes are installed onto the addressable loop wiring, and each unit can communicate with up to 32 mixed type of wireless devices such as wireless smoke and heat detectors, manual call points, sounders and input/output devices. The wireless node comes standard with flexibility and status indication. The built-in DIP switch facilitates out-of-the-box.

- Integral indicator to show polling and alarm activation
- Integral wireless transmission path node with internal antenna
- Easy DIP-switch loop and address setting
- Compatible with 2-wire fire detection and alarm systems
- Monitors for quiescent, alarm and fault conditions
- Easy installation and configuration
- Suitable for indoor or outdoor use
- Low maintenance

Ordering Information  
685-002

## 6002-12 Wireless Loop Expansion Card

CE



The 6002-12 wireless loop expansion card provides four wireless addressable loops to expand the device capacity of the 6002 control and indicating equipment.

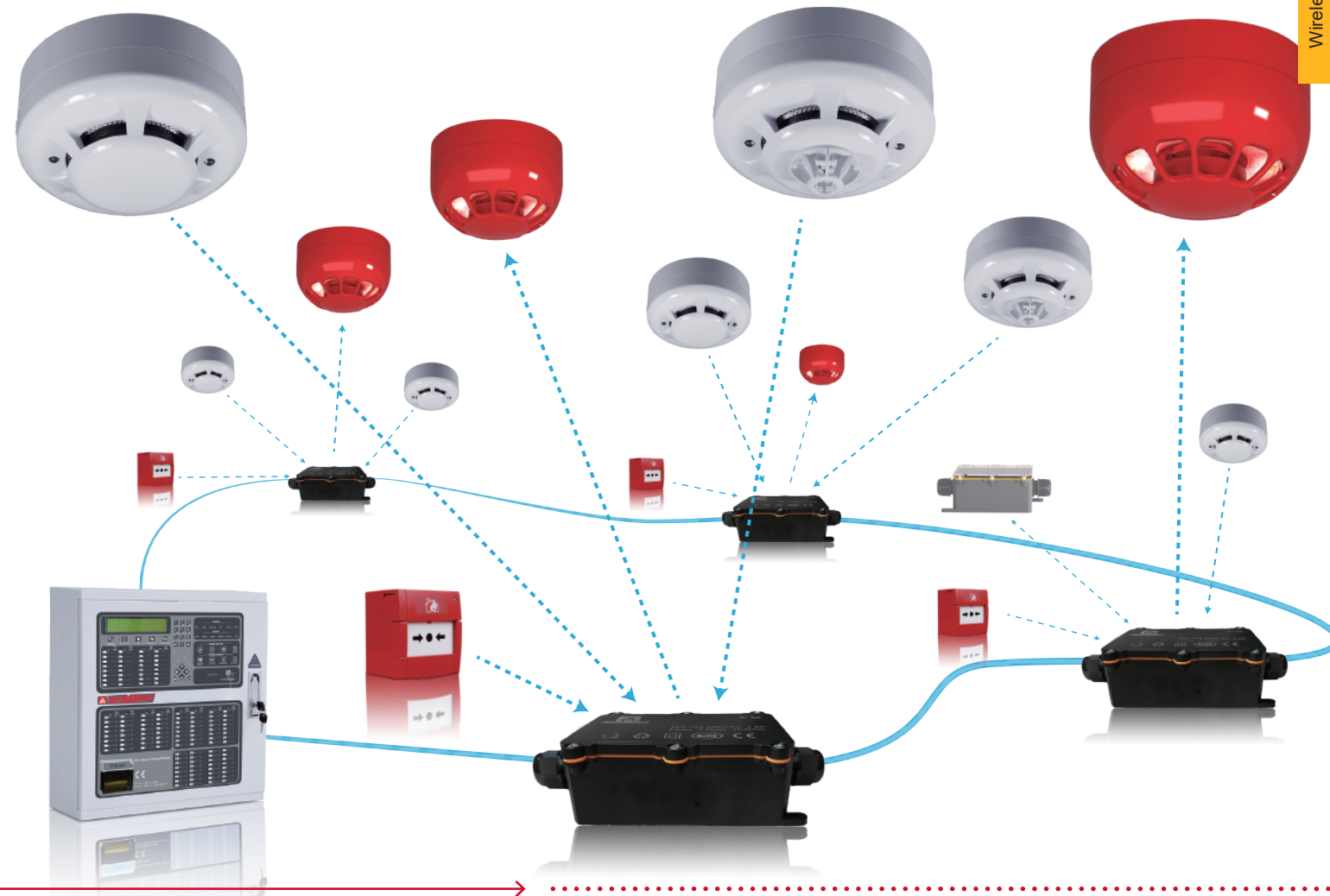
The 6002-12 wireless loop expansion card provide fire detection and alarm system designers with high-quality products that meet the standards for life safety and property protection applications through hardwired seamless with wireless nodes. Up to 128 wireless node can be connected to the 4-loop expansion card.

The 6002-12 wireless loop expansion card provides fire detection and alarm system designers with the increased device capacity required for medium and larger life safety and property protection applications.

- Four wireless addressable loops
- Supports up to 64 wireless nodes
- Supports 500 wireless addressable devices
- Mounts within the control and indicating equipment enclosure
- Easy installation and configuration

Ordering Information  
6002-12

## Application Diagram



# 360 Series Addressable Detectors and Bases



## Description

360 series analogue addressable photoelectric smoke/heat detectors are microprocessor controlled state-of-the-art detectors compatible with popular control and indicating equipment loop protocols. Up to 125 detectors can be connected to each alarm zone loop. Advanced electronics in conjunction with a photoelectric smoke sensing chamber and an electronic thermistor provide early detection of fire and high immunity against unwanted alarms. The heat sensor provides sensitive rate-of-rise operation or fixed-temperature operation when the response threshold value is exceeded. The 360 series analogue addressable detector range provides fire detection and alarm system designers with a premium smoke/heat detector for life safety and property protection applications.

## Features

- Dual photoelectric smoke and heat sensors to detect either smoke, heat or a combination of the phenomena
- Ideal for both fast-flaming and slow smouldering fires
- Advanced algorithms provide analogue detection discrimination
- Surface-mount device (SMD) circuit board design
- High immunity against unwanted alarms
- Stable smoke sensing chamber. No adjustment or replacement required
- Durable heat sensor. No adjustment or replacement required
- Sleek low-profile housing design
- Dual LEDs for 360° visibility
- Convenient 2-wire connection to many popular loop protocols
- Easy installation with simple address setting DIP switches
- Available with 125 usable detector address settings per loop when connected to Numens control and indicating equipment
- Optional remote LED output
- Low maintenance

## Ordering Information

Part Number	Smoke	Heat	Remote LED
SNA-360-S2	✓	—	—
SNA-360-SL	✓	—	✓
HNA-360-H2	—	✓	—
HNA-360-HL	—	✓	✓
SNA-360-C2	✓	✓	—
SNA-360-CL	✓	✓	✓

## CN302A/304A Low Profile Passive Base

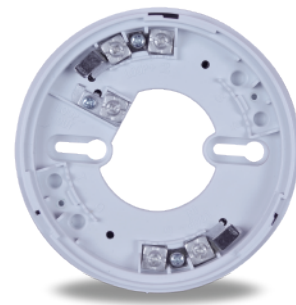


CN302A/CN304A low profile 102 mm diameter bases are used with 2-wire fire detection and alarm system detectors. The range includes a continuity feature that maintains the alarm zone circuit wiring continuity when a device is removed from the base. The low-profile bases are suitable for installation on surfaces where the device connection cable can penetrate the mounting surface.

### Ordering Information

Part Number	Remote LED	Compatible Devices
CN302A	—	SNA-360-S2/ HNA-360-H2/ SNA-360-C2
CN304A	✓	SNA-360-SL/ HNA-360-HL/ SNA-360-CL

## 682 Isolator Base



The 682 isolator base provides electrical isolation of alarm zone wiring for addressable fire detection control and indicating equipment. The use of the 682 as part of the alarm zone wiring ensures that short-circuit faults in the alarm zone loop wiring disable a minimum number of devices.

### Ordering Information

Part Number	Remote LED	Compatible Devices
682-003	—	SNA-360-S2/ HNA-360-H2/ SNA-360-C2
682-004	✓	SNA-360-SL/ HNA-360-HL/ SNA-360-CL

## 481 High Profile Base



481 high profile 102 mm diameter bases are used with 2-wire fire detection and alarm system detectors. The range includes continuity feature that maintains the alarm zone circuit wiring continuity when a device is removed from the base. The high profile bases are suitable for installation on solid surfaces, with both rear or side-entry entry.

### Ordering Information

Part Number	Remote LED	Compatible Devices
481-001	—	SNA-360-S2/ HNA-360-H2/ SNA-360-C2
482-003	✓	SNA-360-SL/ HNA-360-HL/ SNA-360-CL

## 683 Audio/Visual Alarm Base



The 683 addressable audio/visual alarm base is a loop-powered device that provides a fire alarm warning to building occupants. The integration of the audio/visual function with a detector base may displace the need to install separate audio/visual alarm devices. Models with an integrated isolator provides electrical isolation of loop wiring for addressable fire detection control and indicating equipment. The isolator function ensures that short-circuit faults in the alarm zone loop wiring disables a minimum number of devices.

### Ordering Information

Part Number	Isolator	Audible Alarm	Visual Alarm
683-001 <sup>a</sup>	—	✓	—
683-002 <sup>a</sup>	✓	✓	—
683-003 <sup>a</sup>	—	—	✓
683-004 <sup>a</sup>	✓	—	✓
683-005 <sup>a</sup>	—	✓	✓
683-006 <sup>a</sup>	✓	✓	✓
683-007 <sup>b</sup>	—	✓	—
683-008 <sup>b</sup>	✓	✓	—
683-009 <sup>b</sup>	—	—	✓
683-010 <sup>b</sup>	✓	—	✓
683-011 <sup>b</sup>	—	✓	✓
683-012 <sup>b</sup>	✓	✓	✓

<sup>a</sup> Compatible with Non-addressable Detectors  
<sup>b</sup> Compatible with Addressable Detectors



## 660 Addressable Manual Call Point



660 manual call points connect to addressable fire detection CIE. Up to 125 devices can be connected to each alarm zone loop.

A pressure-activated displacement element provides a safe and convenient way for building occupants to manually initiate a fire alarm condition.

All models have an integral alarm indicator that illuminates when the manual call point has been activated. The indicator can also be configured to flash when polled by the fire detection CIE. In the event of a short-circuit fault in the loop transmission path, an optional integral isolator ensures the normal operation of down-stream connected devices. A yellow LED indicates when the isolator is active.

Resetting the manual call point is achieved by inserting a key through the underside of the unit to replace the operating face to the quiescent position.



- Pressure activated displacement element provides a safe user experience
- Integral indicator to show polling and alarm activation
- Resettable with simple key operation
- Suitable for indoor use
- Compatible with 2-wire fire detection and alarm systems
- Monitors for quiescent, alarm and fault conditions
- Integral loop isolator with LED activation indicator available on some models
- Easy installation with simple address setting DIP switches
- Low maintenance

### Ordering Information

Part Number	Loop Isolator
660-001	—
660-005	✓

## 680 Loop Isolator



The 680 loop isolator provides electrical isolation of alarm zone wiring for addressable fire detection control and indicating equipment. The use of the 680 as part of the detector zone wiring ensures that short-circuit faults in the alarm zone loop wiring disable a minimum number of detectors.



- Automatic operation
- Automatic reset
- Compatible with 2-wire fire detection and alarm systems
- LED activation indicator

### Ordering Information

680-001

## 681 Remote Indicator



The 681 remote indicator is used to identify the detector in alarm, and is useful where the detector cannot be easily seen when installed in the building.



- Easily seen when in the alarm condition
- Wide operating voltage
- Easy installation with no adjustments required

### Ordering Information

681-001

## 684 Addressable Device Manager



The 684 addressable device manager is a configuration tool used with Numens addressable devices. It is a hand-held alternative to connecting addressable device to CIE and enables checking and setting of operating parameters.

The 684 has a durable plastic housing, with a high-contrast LCD to display device operating parameters. Durable controls enable the user to navigate through configurable parameters and read from or write settings to the connected device.

Rechargeable user-replaceable batteries provide long operating life. A low battery indication on the LCD prompts users to change primary cells, or recharge secondary cells.

The 684 addressable device manager provides fire detection and alarm system installers with a quick and convenient tool to check and set device parameters.

- Read and write operating parameters to Numens addressable devices
- Rugged plastic housing
- High-contrast LCD
- Intuitive menu to quickly navigate to device-specific parameters
- Connected device digital command test function
- Integral LED for detector remote indicator
- Battery status indication
- Rechargeable user-replaceable batteries with long operating time
- Auto sleep inactivity timer saves battery power
- Low battery indicator
- Manual power control

### Ordering Information

684-001

## 641 Addressable Audio/Visual Alarm Device



The 641 addressable audio/visual alarm devices are multi-tonal alarms, suitable for connection to 2-wire addressable fire detection and alarm systems. Four distinct alarm tones can be selected during installation.

641 alarm devices are loop-powered. Activation is initiated either by a dedicated initiation message from the control and indicating equipment, or optionally when the control and indicating equipment enters the Alarm Condition. Up to 32 devices can be connected to each alarm zone loop.

The range includes weather-proof models. Designed for compliance with EN 54-3 and EN 54-23 Standards, the 641 range of addressable audio/visual alarm devices provide fire detection and alarm system designers with a premium product for life safety applications.

- Visual, audible and audio/visual models available
- Four distinct alarm tones, selectable with DIP-switch
- Loop-powered from control and indicating equipment
- Operates when either a dedicated activation message is received from the control and indicating equipment, or optionally when the control and indicating equipment enters the Alarm Condition
- Loud 90 dB sounder output at 1 m
- Long-life LEDs
- Low quiescent current
- Easy DIP-switch address setting
- Integrated mounting backbox with latch
- Weather-proof models available(IP-65)
- Low maintenance

### Ordering Information

Part Number	Weather-proof (IP-65)	Audible Alarm	Visual Alarm
641-001	—	✓	—
641-002	✓	✓	—
641-003	—	—	✓
641-004	✓	—	✓
641-005	—	✓	✓
641-006	✓	✓	✓

## 640 Addressable Audio/Visual Alarm Device



The 640 addressable audio/visual alarm devices are suitable for connection to 2-wire addressable fire detection and alarm systems. 640 is loop-powered and activation is initiated by a dedicated initiation message from the control and indicating equipment. Up to 32 devices can be connected to each alarm zone loop.

- Visual, audible and audio/visual models available
- Red or white body available for audible alarm device
- Loop-powered from control and indicating equipment
- Operates when a dedicated activation message is received from the control and indicating equipment
- Loud sounder output of 85 dB at 1 m
- Long-life LEDs
- Low quiescent current
- DIP switch address setting

### Ordering Information

Part Number	Audible Alarm	Visual Alarm	White
640-001	✓	—	—
640-002	✓	—	✓
640-003	—	✓	—
640-004	✓	✓	—

## 621 Input/Output Module



621 analogue addressable single input/output modules provide the interface to connect an electrically isolated dry-contact switched input to Numens 2-wire addressable fire detection CIE.

Up to 125 modules can be connected to each alarm zone loop.

A parallel resistive input filter allows multiple states to be monitored at the input. The states are converted to the loop communications protocol by the module, to enable them to be displayed on the CIE.

The range includes a model with an integral isolator that protects other devices connected to the same transmission path. The isolator activates in the event of a short circuit in the loop wiring.



- Single voltage-free relay output
- Single input for connection to dry contact inputs
- Output relay for 621-002 can be powered internally, or externally to conserve loop power load (selectable at installation)
- Monitors and signals three distinct input states: Normal / Alarm / Open-circuit
- Polling indicator shows quiescent operation
- Separate indicators for Quiescent, Alarm and Fault conditions
- Integral isolator model available
- Surface-mount device (SMD) circuit board design
- Easy installation with simple address setting DIP switches
- Convenient 2-wire connection
- Available with 125 usable address settings per loop when connected to Numens CIE
- Low maintenance

### Ordering Information

Part Number	Loop Isolator	Single Input	Input/Output	Switched External 24V
621-001	—	✓	—	—
621-002	—	—	✓	—
621-005	✓	✓	—	—
621-006	✓	—	✓	—
621-007	—	✓	—	✓

## 621 Alarm Zone Input Module



621 addressable alarm zone input modules provide the interface to connect non-addressable input devices (such as detectors or manual call points) to Numens addressable control and indicating equipment.

- Signals Normal, Alarm and Open-circuit alarm zone conditions
- Capable of supplying 35 mA to power non-addressable devices
- Fault condition indicator
- DIP switch address setting
- 125 usable detector address settings per loop



### Ordering Information

Part Number	Loop Power Alarm Zone	External Power Alarm Zone
621-003	✓	—
621-004	—	✓

## 622 Alarm Control Module



The 622 addressable audio/visual alarm control module is suitable for connection to addressable fire detection and alarm systems.

622 is loop-powered and switches external DC 24 V power to non-addressable audio/visual alarm devices. The switched supply is supervised for open- and short-circuit conditions, and availability. Up to 32 modules can be connected to each alarm zone loop.

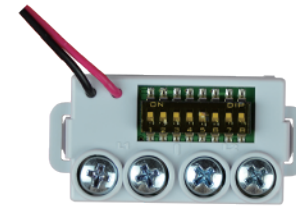
- Single output switches an external DC 24 V source of up to 800 mA.
- Separate indicators for Quiescent, Alarm and Fault conditions
- Polling indicator shows quiescent operation
- Surface-mount device (SMD) circuit board design
- Easy installation with simple DIP switch address setting
- Convenient 2-wire connection
- Available with 32 usable address settings per loop
- Low maintenance



### Ordering Information

622-001

## 620 Mini Input/Output Module



620 addressable alarm zone mini-modules provide the interface to connect non-addressable input/output devices (such as detectors or manual call points and audio/visual alarm devices) to Numens addressable control and indicating equipment.

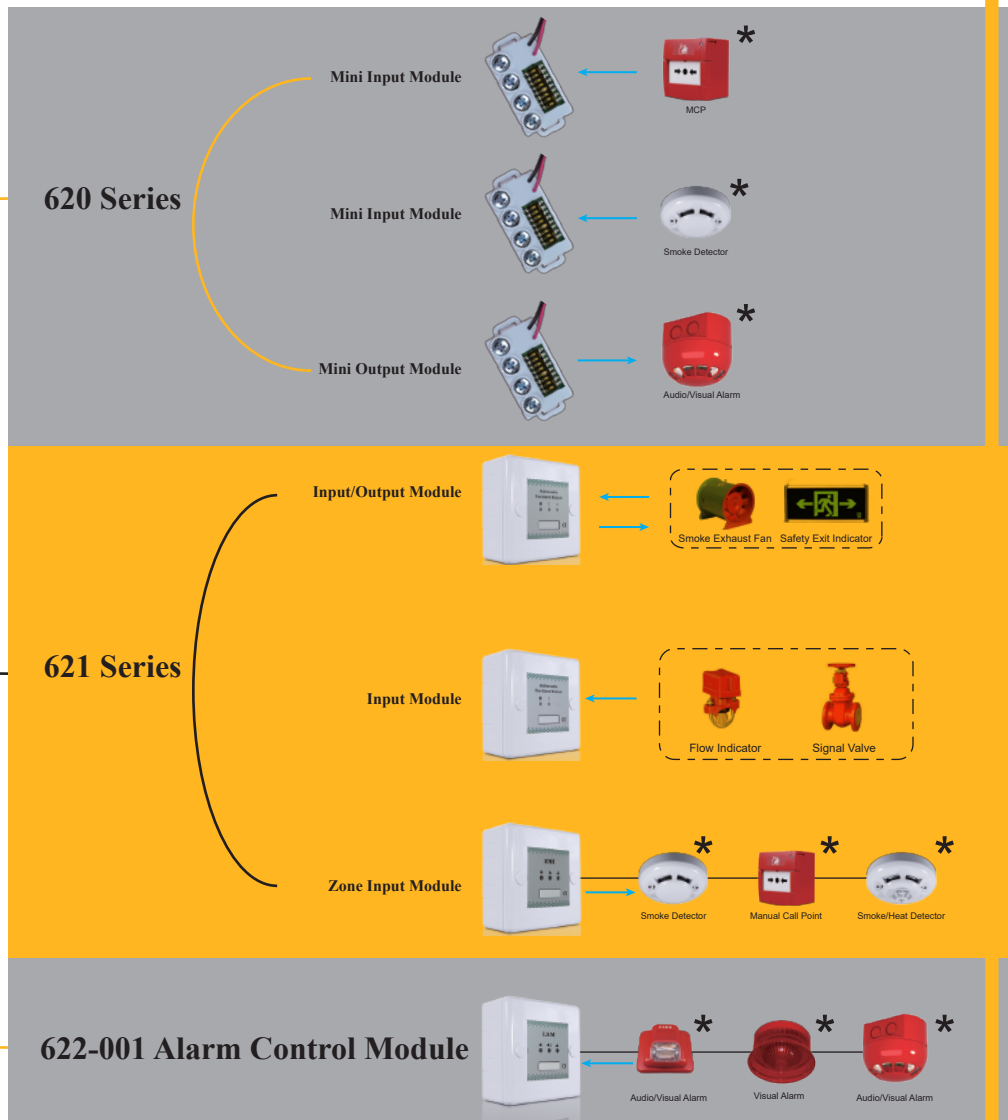
- Signals Normal, Alarm and Open-circuit alarm zone conditions
- Ideal for control of audio/visual alarm devices
- Small size
- Capable of supplying 13 mA to power non-addressable devices
- DIP switch address setting
- 125 usable detector address settings per loop for input modules
- 32 usable detector address settings per loop for output modules

### Ordering Information

Part Number	Detector Input	Dry Contact Input	A/V Alarms Output
620-001	✓	—	—
620-002	—	✓	—
620-003	—	—	✓



6004 Addressable Control Panel



\*\*\* Non-addressable Devices





- Up to 7 ERPs controlled from control and indicating equipment using RS-485 serial bus
- Language alternative to English available at the time of manufacturer
- Configurable single zone or two coincident zone activation
- Two configurable extinguishant releasing outputs control up to 6 releasing relays or 8 ignition actuators
- Configurable Stage One output
- Configurable Hold output
- Manual release control (integral and external)
- Configurable pre-release delay time for both auto and manual release activation
- Configurable Stage Two alarm output as steady state or pulsing
- Configurable Released indication for immediate indication or activation by release pressure switch signal
- Configurable extinguishment release time
- Configurable extinguishant released input signal (N/O or N/C)
- Configurable reset inhibit time
- Up to 7 accessories supported using RS-485 serial bus
- Configurable earth fault monitoring
- Configurable fault output
- Configurable low pressure input signal (N/O or N/C)
- 3 Access Levels
- Separate internal system fault indicator
- High contrast backlit LCD for device configuration and system status
- Robust metal enclosure

The 6005 extinguishant releasing panel (ERP) provides a flexible and easily configurable solution where rapid extinguishment of a fire is required to protect people and high-value assets. The 6005 is compatible with Numens addressable and non-addressable control and indicating equipment. Although default configuration settings facilitates out-of-box installation and rapid commissioning, operational parameters are configurable to satisfy site-specific requirements. An internal battery-backed power supply and a wide range of accessories provides system designers with a range of equipment options to complete demanding life safety and property protection design requirements.

### Ordering Information

6005-01

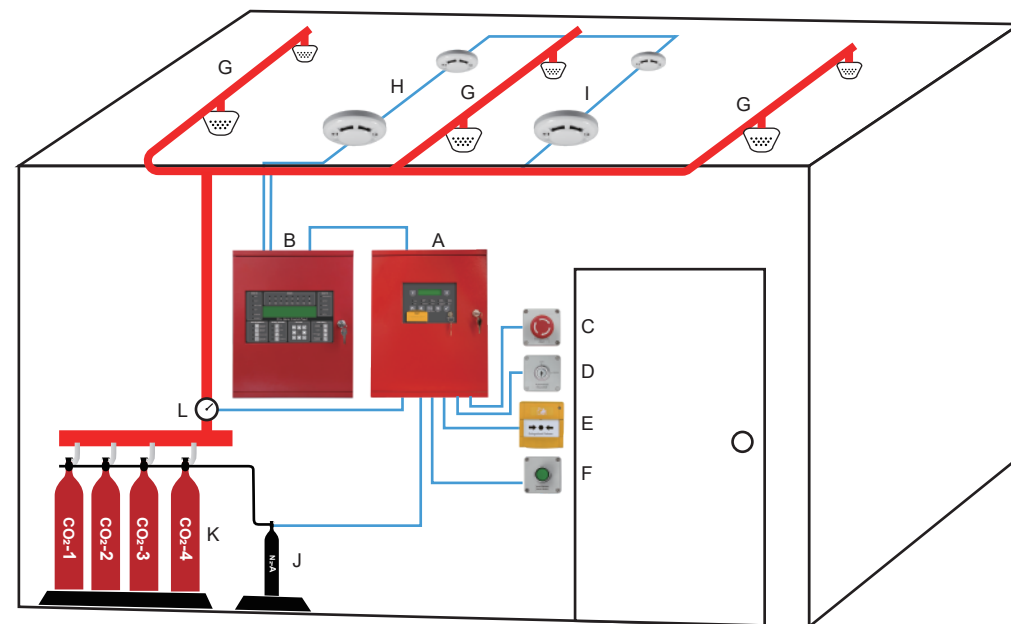
### Description

Numens fire extinguishant system provides a flexible and easily configurable solution for special hazard protection areas where extinguishant is used to rapidly respond to a fire. The range include: Extinguishant releasing panel, Remote status indicator, Ancillary output panel, Auto/Manual mode selection key-switch, Manual release control button, Remote abort release button, Hold release on/off button, Main/Reserve extinguishant key-switch. This make Numens fire extinguishant system suitable for various sized protection area. Numens fire extinguishant system are compatible with Numens addressable and non-addressable fire alarm system.

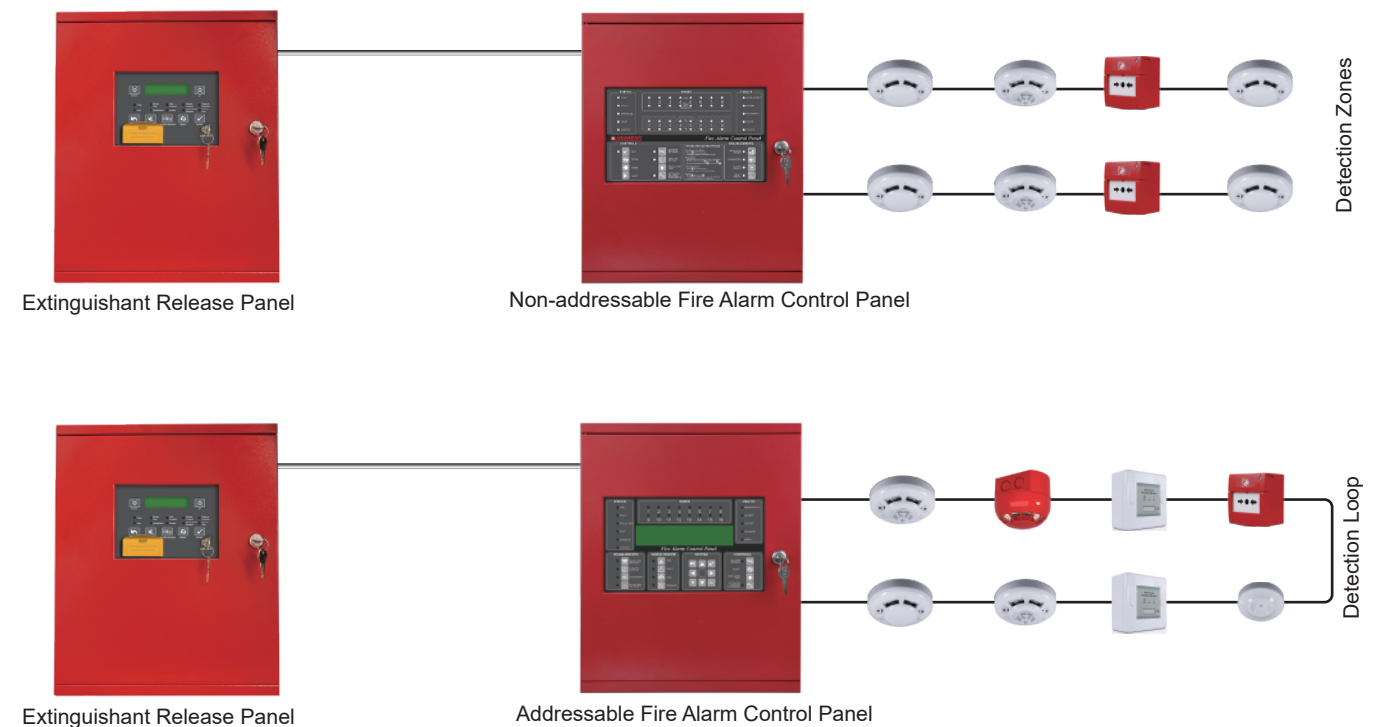
### Communication With Fire Alarm System

### Diagram Key

- A: Extinguishant release panel
- B: Fire alarm control panel
- C: Remote abort release button
- D: Auto/Manual mode selection key-switch
- E: Manual release control button
- F: Hold release on/off button
- G: Gas release nozzles
- H: Fire detectors (Zone A)
- I: Fire detectors (Zone B)
- J: Pilot cylinder
- K: Extinguishant cylinders
- L: Pressure switch



Application Diagram



## 6005-03 ERP Manual Release Control



The ERP manual release control (6005-03) replicates the function of the manual release control mounted on the ERP front panel.

Ordering Information  
6005-03

## 6005-02 ERP Auto/Manual Key-switch Control



The ERP auto/manual key-switch control (6005-02) provides an alternative control to the key-switch mounted on the ERP front panel (see Fig. 1). The 6005-02 may be mounted in a location remote from the ERP.

Ordering Information  
6005-02

## 6005-04 ERP Hold Release On/Off Control



The ERP hold release on/off control (6005-04) is an external control used to suspend or continue the extinguishant release sequence.

Ordering Information  
6005-04

## 6005 ERP Status Indicators Unit



The ERP status indicators unit clearly displays the current status of the ERP. Connection to the ERP is via the RS 485 port on the ERP so the unit may be mounted in or around the protected area, including a remote location.

The following ERP status indications are displayed:

- Discharge countdown timer
- Manual only
- Auto/Manual
- Hold Activated
- Disable
- Imminent
- Activation
- Released

Ordering Information

Part Number	Weather-proof (IP-65)
6005-07	—
6005-08	✓

## 6005-05 ERP Abort Release Control



The ERP abort release control (6005-05) is an external control used to abort release of the extinguishant media.

Ordering Information  
6005-05

## 6005 ERP Controls and Status Indicators



The ERP controls and status indicators unit provides the indicators of the ERP status indicators unit, together with an auto/manual key-switch control and a manual release control. Connection to the ERP is via the RS 485 port on the ERP so the unit may be mounted in or around the protected area, including a remote location.

Ordering Information

Part Number	Weather-proof (IP-65)
6005-09	—
6005-10	✓

## 6005-06 ERP Main/Reserve Mode Selection Control



The ERP main/reserve mode selection control (6005-06) is an external control used to switch between the main reserve extinguishant media. The control is an alternative to switching between media sources from the ERP LCD display.

Ordering Information  
6005-06

## 6005-11 ERP Ancillary Output Unit



The ERP ancillary output unit provides additional output connections from the ERP to other equipment (such as HVAC) in and around the protected area. Connection to the ERP is via the RS 485 port on the ERP so the unit may be mounted in a remote location.

Ordering Information  
6005-11



# 4001/4003 Non-addressable Control and Indicating Equipment



- 2, 4 or 8 detection zones
- Supports up to 32 non-addressable devices per alarm zone circuit
- Configurable non-latching alarm zones
- Configurable alarm dependency (zone coincidence detection)
- Configurable timer to delay output activation (up to 10 min)
- Capacitor end-of-line device
- 3 Access Levels
- Single-person test mode
- Day/night mode configurable
- Manual activation of alarm devices
- Auxiliary DC 24 V output, with short-circuit protection
- Programmable non-addressable alarm output circuit
- 2 unmonitored relay contacts for Fire Alarm Condition outputs
- 1 unmonitored relay contact for Fault Condition output
- 3 voltage-free inputs for remote reset, evacuation start/stop, and Day/Night mode
- Optional detection zone N/O and N/C relay outputs
- Optional remote LED detection zone displays
- Clear alarm zone LED indicators, with a single indicator for Fault, Disable and Test Condition indication
- Metal enclosure in white or red
- Surface mounting
- Supports up to 16 Repeater Panels
- Easy installation

The 4001/4003 non-addressable control and indicating equipment forms the central part of a fire detection and alarm system. The 2-wire 4001/4003 is compatible with Numens non-addressable devices.

The 4001/4003 comes standard with features that allows flexibility and expandability. Default configuration programming facilitates out-of-box installation and rapid commissioning.

The 4001/4003 control panel provides fire detection and alarm system designers with an economical product for life safety and property protection applications.

## Ordering Information

Part Number	2 Zone Circuits	4 Zone Circuits	8 Zone Circuits	Metal Enclosure	Plastic Enclosure
4001-01	✓	—	—	—	✓
4001-02	—	✓	—	—	✓
4001-03	—	—	✓	—	✓
4003-04	✓	—	—	✓	—
4003-05	—	✓	—	✓	—
4003-06	—	—	✓	✓	—

# 4001-03 Repeater Panel



The 4001 non-addressable DC repeater panel extends the **4001/4003** non-addressable control and indicating equipment display to a remote location. The repeater panel is compatible with all Numens 4001/4003 control panels and can be powered from the existing DC 24 V supply.

The repeater panel comes standard with features that allows flexibility and expandability. Default configuration programming facilitates out-of-box installation and rapid commissioning.

The 4001 DC repeater panel provides fire detection and alarm system designers with an economical product for life safety and property protection applications.

## Ordering Information

4001-03

- Up to 8 detection zones can be displayed and controlled
- Clear alarm zone LED indicators, with a single indicator for Fault, Disable and Test Condition indication
- Recessed mounting enclosure
- Powered from the control and indicating equipment DC 24 V supply or an external supply
- Up to 4 repeater panels can be connected to a single control panel

# 4002 Control and Indicating Equipment



The 4002 16-zone non-addressable control and indicating equipment forms the central part of a fire detection and alarm system. The 2-wire 4002 is compatible with Numens non-addressable devices. The 4002 comes standard with features that allows flexibility and expandability. Default configuration programming facilitates out-of-box installation and rapid commissioning.

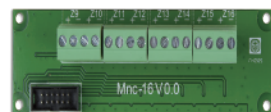
The 4002 control panel provides fire detection and alarm system designers with an economical product for life safety and property protection applications.

- 16 detection zones
- Supports up to 32 non-addressable devices per alarm zone circuit
- Configurable non-latching alarm zones, alarm dependency (zone coincidence detection), and output delay timer
- 3 Access Levels
- Single-person test mode
- Day/night mode configurable
- Manual activation of alarm devices
- Supervised auxiliary DC 24 V output
- 2 programmable non-addressable alarm output circuits
- 2 unmonitored relay contacts for Fire Alarm Condition outputs
- 3 voltage-free inputs for remote reset, evacuation start/stop, and Day/Night mode
- Surface mounting metal enclosure or recessed mounting plastic enclosure
- Supports up to 7 Repeater Panels
- Easy installation

## Ordering Information

Part Number	Metal Enclosure	Plastic Enclosure
4002-01	—	✓
4002-10	✓	—

# 4001-12 8-zone Expansion Card



The 4001-12 expansion card provides 8 detection zones to expand the non-addressable device capacity. The 4001-12 comes standard with features that allows flexibility and expandability. Default configuration programming facilitates out-of-box installation and rapid commissioning.

The 4004-12 expansion panel provides fire detection and alarm system designers with an economical product for life safety and property protection applications.

## Ordering Information

4001-12

- 8 detection zones
- Supports up to 32 non-addressable devices per alarm zone circuit
- Capacitor end-of-line device

# 4002-02 Repeater Panel



The 4002 non-addressable DC repeater panel extends the **4002** non-addressable control and indicating equipment display to a remote location. The repeater panel is compatible with all Numens 4002 control panels and can be powered from the existing DC 24 V supply.

The repeater panel comes standard with features that allows flexibility and expandability. Default configuration programming facilitates out-of-box installation and rapid commissioning.

## Ordering Information

4002-02

- 16 detection zones can be displayed and controlled
- Clear alarm zone LED indicators, with a single indicator for Fault, Disable and Test Condition indication
- Recessed mounting enclosure
- Powered from the control and indicating equipment DC 24 V supply or an external supply
- Up to 4 repeater panels can be connected to a single control panel
- Easy installation

# 4004 Control and Indicating Equipment



The 4004 16-zone non-addressable control and indicating equipment forms the central part of a fire detection and alarm system. The 4004 is compatible with Numens non-addressable devices.

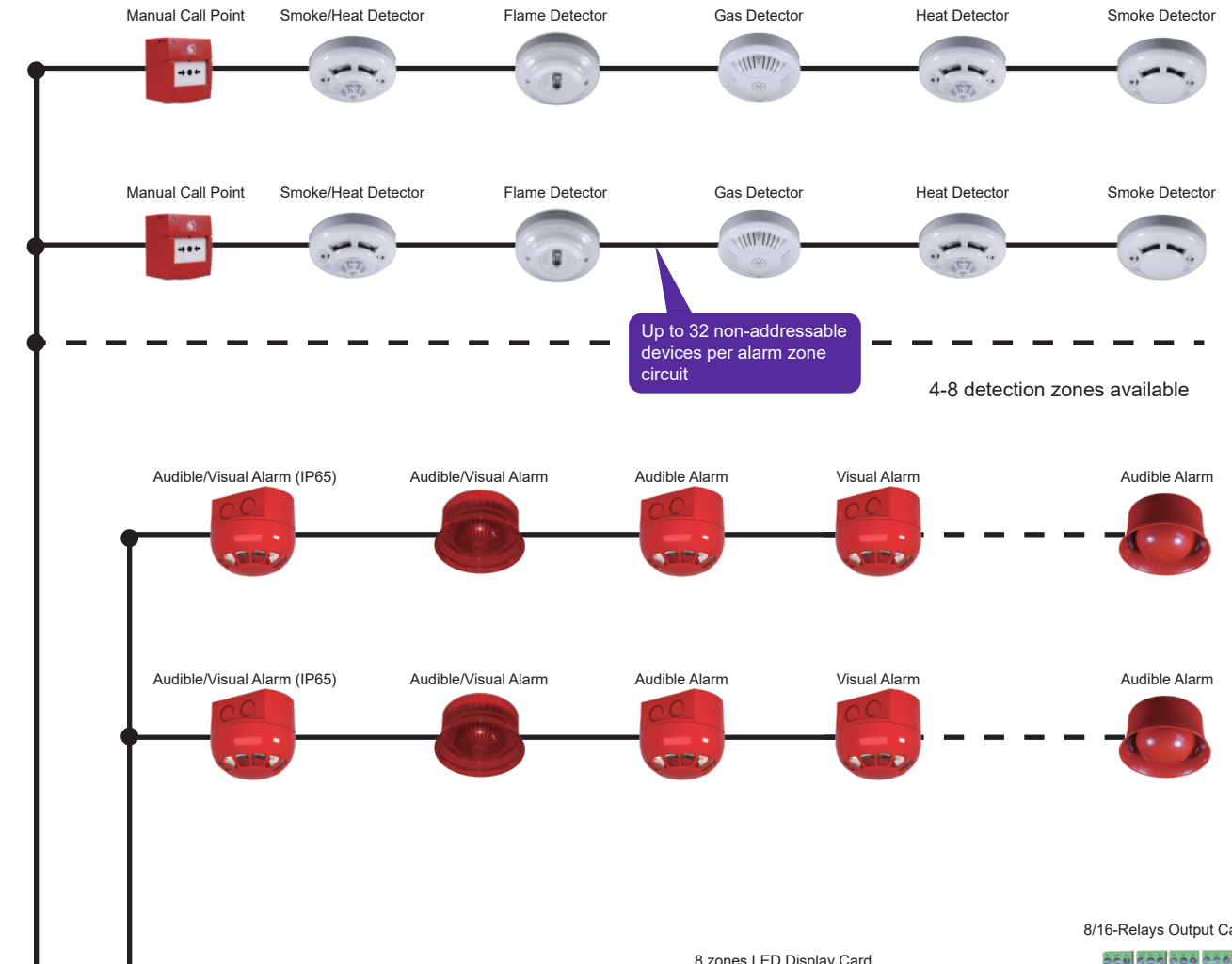
The 4004 comes standard with features that allows flexibility and expandability. Default configuration programming facilitates out-of-box installation and rapid commissioning.

The 4004 control and indicating equipment provides fire detection and alarm system designers with an economical product for life safety and property protection applications.

- 2, 4, 8 and 16 detection zone models available
- Backlit LCD display providing 4 rows of 40 characters
- Supports up to 32 non-addressable devices per alarm zone circuit
- Configurable non-latching alarm zones
- Configurable alarm dependency (zone coincidence detection)
- Configurable timer to delay output activation (up to 10 min)
- Capacitor end-of-line device
- Day/night mode configurable
- Supervised auxiliary DC 24 V output
- 2 programmable non-addressable alarm output circuits
- 2 unmonitored relay contacts for Fire Alarm Condition outputs
- 1 unmonitored relay contact for Fault Condition output
- Optional remote LED detection zone displays
- Surface mounting metal enclosure or recessed mounting plastic enclosure
- Supports up to 64 Repeater Panels
- Max expandable to 272 detection zones

## Ordering Information

Part Number	2 Zone Circuits	4 Zone Circuits	8 Zone Circuits	16 Zone Circuits
4004-05	✓	—	—	—
4004-06	—	✓	—	—
4004-07	—	—	✓	—
4004-08	—	—	—	✓



# 4004-09 16-zone Expansion Panel



The 4004-09 expansion panel provides 16 detection zones to expand the non-addressable device capacity of 4004 control and indicating equipment.

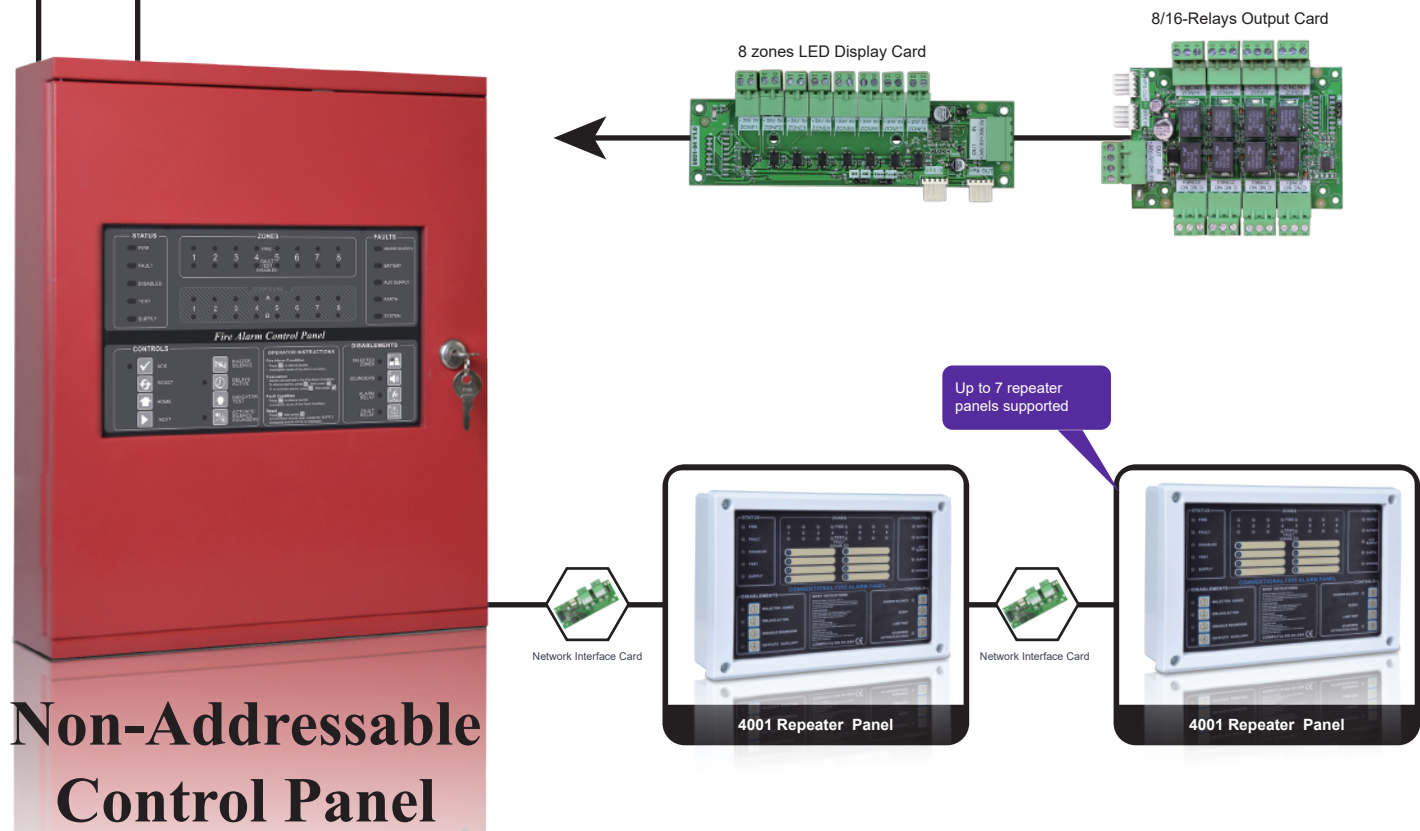
The 4004-09 comes standard with features that allows flexibility and expandability. Default configuration programming facilitates out-of-box installation and rapid commissioning.

The 4004-09 expansion panel provides fire detection and alarm system designers with an economical product for life safety and property protection applications.

- 16 detection zones
- Supports up to 32 non-addressable devices per alarm zone circuit
- Capacitor end-of-line device
- Supervised auxiliary DC 24 V output
- 2 programmable non-addressable alarm output circuits
- 1 unmonitored relay contacts for Fire Alarm Condition outputs
- 1 unmonitored relay contact for Fault Condition output
- Optional detection zone N/O and N/C relay outputs
- Optional remote LED detection zone displays
- Clear alarm zone LED indicators, with a single indicator for Fault, Disable and Test Condition indication
- Recessed mounting plastic enclosure option
- Easy installation

## Ordering Information

4004-09



# Non-Addressable Control Panel



# 300/310 Series Non-addressable Detectors and Bases



## Description

300/310 series non-addressable photoelectric smoke/heat detectors are state-of-the-art detectors suitable for connection to 2-wire or 4-wire non-addressable fire detection control and indicating equipment, or to addressable fire detection control and indicating equipment that can accept non-addressable type detectors.

Advanced electronics in conjunction with a photoelectric smoke sensing chamber and an electronic thermistor provide early detection of fire and high immunity against unwanted alarms. The heat sensor provides sensitive rate-of-rise operation or fixed-temperature operation when the response threshold value is exceeded.

The 300/310 series non-addressable detector range provides fire detection and alarm system designers with a Standards-compliant economical smoke/heat detector for life safety and property protection applications.

## Features

- Dual photoelectric smoke and heat sensors to detect either smoke, heat or a combination of the phenomena
- Advanced algorithms provide analogue detection discrimination
- Ideal for both fast-flaming and slow smouldering fires
- Surface-mount device (SMD) circuit board design
- High immunity against unwanted alarms
- Stable smoke sensing chamber. No adjustment or replacement required
- Durable heat sensor. No adjustment or replacement required
- 2-wire and 4-wire models for DC 12 V and DC 24 V operation
- 4-wire model for DC 48 V operation
- 4-wire models available with a N/O alarm relay output
- 4-wire models available with auto-reset function
- 2-wire models available with remote LED output
- Connects to zone monitor for use with addressable control and indicating equipment
- Sleek low-profile housing design
- Dual LEDs for 360° visibility
- Low maintenance

## Ordering Information

Part Number	2-wire	4-wire	Remote Indicator	Relay Output	Auto-Reset
SNC-300-S2	✓	—	—	—	—
SNC-300-SL	✓	—	✓	—	—
SNC-300-SR	—	✓	—	✓	—
SNC-300-SRR	—	✓	—	—	—
SNC-300-SR4	—	✓	—	✓	—
SNC-300-SA	—	✓	—	—	✓
HNC-310-H2	✓	—	—	—	—
HNC-310-HL	✓	—	✓	—	—
HNC-310-HR	—	✓	—	✓	—
HNC-310-HA	—	✓	—	—	✓
SNC-300-C2	✓	—	—	—	—
SNC-300-CL	✓	—	✓	—	—
SNC-300-CR	—	✓	—	✓	—
SNC-300-CR4	—	✓	—	✓	—
SNC-300-CA	—	✓	—	—	✓

# CN302x/CN304x Low Profile Passive Base



CN302x/CN304x low profile 102 mm diameter bases are used with 2-wire and 4-wire fire detection and alarm system detectors. The range includes a continuity feature that maintains the alarm zone circuit wiring continuity when a device is removed from the base. The low-profile bases are suitable for installation on surfaces where the device connection cable can penetrate the mounting surface.

## Ordering Information

Part Number	5-Terminal	9-Terminal	UL Approved
CN3021	✓	—	✓
CN3023	✓	—	—
CN3041	—	✓	✓
CN3043	—	✓	—

## 484 Relay Base

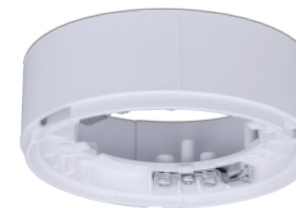


The 484 relay base provides additional voltage-free relay output contacts for 4-wire non-addressable detectors when the detectors enters the Alarm condition. The relay base can be used to activate ancillary equipment. The range of relay bases provides fire detection and alarm system designers with flexible solutions, including models suitable for mounting on solid ceilings with conduit entry points.

## Ordering Information

Part Number	Single Pole Relay Output	Double Pole Relay Output
484-001	✓	—
484-002	—	✓

## 481 High Profile Base



The 481 high profile bases are used with 2-wire and 4-wire fire detection and alarm systems that include additional features, such as remote indicator or alarm relay outputs.

## Ordering Information

Part Number	5-Terminal	9-Terminal
481-002	✓	—
481-004	—	✓

## 487 Audio/Visual Alarm Base



487 low profile 99 mm diameter bases are used with 2-wire and 4-wire fire alarm system devices. The range includes a continuity feature that maintains the alarm zone circuit wiring continuity when a device is removed from the base. The low profile bases are suitable for installation on surfaces where the device connection cable can penetrate the mounting surface.

## Ordering Information

Part Number	3-Terminal	5-Terminal
487-004	✓	—
487-008	—	✓

## 408 Smoke Detector with Relay and Sounder Output



408 non-addressable photoelectric smoke detectors are suitable for direct connection to equipment via a voltage-free relay. The relay operates when an alarm signal is released by the detector, and can be used to control the operation of the connected equipment. An audible sounder is activated when the detector releases an Alarm signal. Advanced electronics in conjunction with a photoelectric smoke sensing chamber provide early detection of fire and high immunity against unwanted alarms. The 408 non-addressable detector range provides fire detection and alarm system designers with a convenient solution for property protection applications.

### Ordering Information

Part Number	Auto-reset
408-001	—
408-004	✓

- Dry-contact relay output for connection to other equipment
- Loud 85 dB sounder to alert adjacent personnel
- Photoelectric smoke sensing chamber technology
- Visual indication for an alarm condition
- Auto-reset from Alarm condition when smoke level is less than the alarm threshold level
- Test and Hush features in a single button
- Test and Hush visual indicator
- Test button verifies alarm operation
- Hush function temporarily silences unwanted alarms and smoke chamber fault indication
- Smoke chamber fault audible and visual indication
- Surface-mount device (SMD) circuit board design
- Supplied with detachable base
- Easy installation
- Low maintenance

## 401 Flame Detector



The 401 non-addressable ultra-violet flame detectors are suitable for connection to 2-wire and 4-wire non-addressable fire detection control and indicating equipment, or to addressable fire detection control and indicating equipment that can accept non-addressable type detectors. The 401 UV flame detectors are suited to applications where flames rapidly develop due to the nature of the combustible materials, such as where petrochemical products are used or stored.

- High sensitivity UVtron sensor tube technology
- High immunity to electrical noise and RF interference
- Fast response time
- Wide field of view
- Polarity insensitive
- 2-wire and 4-wire models for DC 12 V and DC 24 V operation
- Connects to zone monitor for use with addressable control and indicating equipment

### Ordering Information

Part Number	2-wire	4-wire	Remote Indicator	Relay Output	Auto-Reset
401-001	✓	—	—	—	—
401-002	✓	—	✓	—	—
401-003	—	✓	—	✓	—
401-004	—	✓	—	✓	✓

## 400 CO Detector



400-series non-addressable carbon monoxide (CO) gas alarms are suitable for connection to 2-wire and 4-wire non-addressable fire detection control and indicating equipment. 400 detectors can also connect to 2-wire and 4-wire addressable fire detection control and indicating equipment that can accept non-addressable detectors. Advanced electronics in conjunction with a semiconductor gas sensor provide early detection of carbon monoxide gas and high immunity against unwanted alarms.

### Ordering Information

Part Number	2-wire	4-wire	Remote Indicator	Relay Output
400-001	✓	—	—	—
400-002	✓	—	✓	—
400-003	—	✓	—	✓

- Japanese Nemoto Electrochemical Accurate Sensor
- Detector auto-reset once gas levels fall below alarm threshold levels
- 2-wire and 4-wire models for DC 12 V and DC 24 V operation
- Magnet-initiated alarm test function
- N/C or N/O alarm relay output
- Loud 85 dB internal sounder
- Connects to zone monitor for use with addressable control and indicating equipment

## 405 Explosion-proof Flame Detector



The 405 explosion-proof infrared flame detector consists of two infrared pyroelectric sensors with different frequency bands, an optical lens and an aluminum casting shell. The detector is suitable for the following places: there is strong flame radiation in the fire; there may be a fire without smoldering stage such as liquid burning; it needs to respond quickly to the flame; It can be effectively used in the aerospace industry, hangars, aircraft repair yards, chemical industry, road tunnels, ammunition and explosive warehouses, paint factories, petrochemical companies, natural gas exploration and production companies, pharmaceutical companies, power stations, printing companies, other flammable occasions where combustibles contain carbon substances such as material warehouses.

- Dual-band infrared design for complex environmental conditions;
- High immunity against radiation sources such as sunlight, artificial light source and hot body;
- Aluminum casting shell for weather-proof and explosion-proof design;
- Suitable for indoor and outdoor use;
- DIP switch for adjustable sensitivity;
- NO fire relay output;
- NC or NO fault relay output;
- DC 24 V operation;
- Low maintenance

### Ordering Information

405-001

## 402 Propane/Natural Gas Detector



402-series non-addressable gas alarms are suitable for connection to 2-wire and 4-wire non-addressable fire detection control and indicating equipment. 402 detectors can also connect to 2-wire and 4-wire addressable fire detection control and indicating equipment that can accept non-addressable detectors. Advanced electronics in conjunction with a semiconductor gas sensor provide early detection of propane/natural gas with high immunity against unwanted alarms.

### Ordering Information

Part Number	Propane Gas	Natural Gas	2-wire	4-wire	Relay Output	Remote LED Output
402-001	✓	—	✓	—	—	—
402-002	✓	—	—	✓	✓	—
402-003	—	✓	✓	—	—	—
402-004	—	✓	—	✓	✓	—
402-005	✓	—	✓	—	—	✓
402-006	—	✓	✓	—	—	✓

- Japanese Figaro gas sensor (UL approved)
- 2-wire and 4-wire models for DC 12 V and DC 24 V operation
- N/C or N/O alarm relay output
- Loud 85 dB internal sounder
- Connects to zone monitor for use with addressable control and indicating equipment

## 407 Reflective Beam Line-Type Smoke Detector



The 407 non-addressable reflective beam line-type smoke detector is suitable for connection to 2-wire non-addressable fire detection CIE, or to addressable fire detection CIE that can accept non-addressable type detectors. The transceiver component includes four selectable detection ranges, providing smoke detection over distances from 8 m to 100 m. Three sensitivity settings can be used to compensate for differences in installed environments. An integral laser is used to accurately align the beam transmitter with the reflector. The 407 non-addressable reflective beam line-type smoke detectors provide fire detection and alarm system designers with a Standards-compliant, economical smoke detector for high spaces and areas with complex ceilings where point-type smoke detectors may not be suitable due to environmental conditions.

- Four selectable ranges provide smoke detection for distances from 8 m to 100 m
- Three selectable sensitivity settings
- Single transceiver and reflector components
- Integrated laser alignment tool and display
- Digital display shows light intensity at the receiver
- Self-diagnostics function monitors internal faults
- Automatic compensation for lens contamination, alignment drift and transmitted beam ageing
- Separate Alarm and Fault relay outputs
- Easy to install and commission
- Low maintenance

### Ordering Information

407-001



## 460-002 Non-addressable Manual Call Point



The 460 manual call points includes a pressure-activated displacement element to provide a safe and convenient way for building occupants to manually initiate a fire alarm condition. Resetting the manual call point is achieved by inserting a key through the underside of the unit to replace the operating face to the quiescent position. The 460 range of manual call points provide fire detection and alarm system designers with a Standards-compliant, economical product for life safety and property protection applications.

- Pressure activated displacement element provides a safe user experience
- Integral indicator to show polling and alarm activation
- Resettable with simple key operation
- Suitable for indoor use
- Monitors for quiescent, alarm and fault conditions

Ordering Information  
460-002



## 447 Non-Addressable Audio/Visual Alarm Device



The 447 non-addressable audio/visual alarm devices are multi-tonal alarms, suitable for connection to 2-wire fire detection and alarm systems. 447 is compatible with both non-addressable and addressable Numens control and indicating equipment. Activation is initiated upon connection of the operating voltage, allowing connection to either a switched supply at the control and indicating equipment, or via an output module. The range includes weather-proof models. Four distinct alarm tones can be selected during installation.

- Visual, audible and audio/visual models available
- Four distinct alarm tones, selectable with DIP switch
- Powered from control and indicating equipment or via a module with a switched supply output
- Loud 90 dB sounder output at 1 m
- Long-life LEDs
- Low quiescent current
- Integrated mounting backbox with latch
- Weather-proof models available
- Low maintenance

### Ordering Information

Part Number	Weather-proof (IP-65)	Audible Alarm	Visual Alarm
447-001	—	✓	—
447-002	✓	✓	—
447-003	—	—	✓
447-004	✓	—	✓
447-005	—	✓	✓
447-006	✓	✓	✓

## 460-009 Weather-proof Enclosure



460-009 manual call point enclosures provide a weather proof enclosure for Numens addressable and non-addressable system manual call points. Access to the manual call point is provided by an easy-to-operate pull-down lever, to unlock the hinged transparent cover. Resetting the manual call point is achieved by inserting a key through the underside of the unit to replace the operating face to the quiescent position. The 460-009 weather proof enclosure provides fire detection and alarm system designers with a premium solution for outdoor life safety and property protection applications.

- Robust enclosure
- IP-65 rating
- Suitable for outdoor use
- Compatible with Numens addressable and non-addressable manual call points
- Easy installation
- Low maintenance

Ordering Information  
460-009

## 442 Non-Addressable Audio/Visual Alarm Device



The 442 audio/visual alarm devices are suitable for connection to 2-wire and 4-wire fire detection and alarm systems. 442 will operate with both addressable and non-addressable fire detection control and indicating equipment. Activation is initiated upon connection of the operating voltage, allowing connection to either a switched supply or via an addressable module.

- Visual, audible and audio/visual models available
- Red or white body available for audible alarm device
- Operates when the supply voltage is connected to the device
- Compatible with relay outputs from control and indicating equipment, or from an output module connected to addressable alarm circuit wiring
- DC 24 V operation
- Loud sounder output of 85 dB at 1 m
- Long-life LEDs
- Zero current load in quiescent condition

### Ordering Information

Part Number	Audible Alarm	Visual Alarm	Red	White
442-001	✓	—	✓	—
442-002	✓	—	—	✓
442-003	—	✓	✓	—
442-004	✓	✓	✓	—

## 463-001 Non-addressable Pull Station



463 pull stations connect to non-addressable fire detection control and indicating equipment, or to addressable fire detection control and indicating equipment that can accept non-addressable devices. Alarm signaling is achieved by pushing in the displacement element and pulling the operating handle downwards until it latches, providing a safe and convenient way for building occupants to manually initiate a fire alarm condition. Resetting the pull station is achieved by inserting a key to reset the displacement element plate, causing the operating handle to return to the quiescent position. The 463 range of pull stations provide fire detection and alarm system designers with an economical product for life safety and property protection applications.

- Pressure activated displacement element provides a safe user experience
- Integral backlit "ACTIVATED" alarm indicator
- Resettable with simple key operation
- Suitable for indoor use
- Wide operating voltage range
- Compatible with 2-wire and 4-wire fire detection and alarm systems
- Easy installation
- Low maintenance

Ordering Information  
463-001

## 440 Non-Addressable Alarm Bell



440 non-addressable alarm bells are suitable for connection to 2-wire and 4-wire fire detection and alarm systems. 440 alarm bells will operate with both addressable and non-addressable fire detection control and indicating equipment. Activation is initiated upon connection of the operating voltage, allowing connection to either a switched supply or via an addressable module.

- Operates when the supply voltage is connected to the device
- Compatible with relay outputs from control and indicating equipment, or from an output module connected to addressable alarm circuit wiring
- DC 24 V operation
- Loud sound output of 95 dB at 1 m
- Zero current load in quiescent condition

### Ordering Information

Part Number	Φ150mm	Φ200mm	Weather-Proof
440-001	✓	—	—
440-002	—	✓	—
440-003	✓	—	✓
440-004	—	✓	✓





## 205 Smoke Alarm



205 DC smoke alarms provide battery powered smoke detection and alarm functions within a single unit. Advanced electronics in conjunction with a photoelectric smoke sensing chamber provide early detection of fire and high immunity against unwanted alarms. Interconnectable 205 DC smoke alarms use a wireless transmission path. Configuration into a group ensures that other units within radio signal range are not affected by a test or fire alarm occurring within the configured group. 205 DC smoke alarms are powered by a long-life lithium-ion battery and do not require a mains supply.

- Photoelectric smoke sensing chamber technology
- Test and Hush features in a single button
- Test button verifies battery and alarm operation
- Hush function temporarily silences unwanted alarms, low battery indication and smoke chamber fault indication
- Loud 85 dB sounder to alert occupants
- No limit for interconnectable units using the wireless transmission path
- Interconnectable smoke alarms configure into groups
- Smoke chamber fault audible indication
- Surface-mount device (SMD) circuit board design
- Up to 10 years operation under normal conditions
- Low battery warning signal
- Can be controlled by 261 Remote Control
- Easy installation
- Low maintenance

### Ordering Information

Part Number	Wireless Interconnect	Replaceable Battery
205-001	—	—
205-002	✓	✓
205-004	—	—
205-005	✓	✓
205-014	✓	—
205-015	✓	—

## 205 Smoke/Heat Alarm



205 DC smoke/heat alarms provide lithium-ion battery powered smoke and heat detection, together with alarm functions within a single unit. Advanced electronics in conjunction with a photoelectric smoke sensing chamber and sensitive heat detection element provide early detection of fire and high immunity against unwanted alarms. Models with user-replaceable and non-replaceable batteries are available. Interconnectable 205 DC smoke/heat alarms use a wireless transmission path. Configuration into a closed group ensures that other units within radio signal range are not affected by a test or fire alarm occurring within the configured group.

- Photoelectric smoke and heat sensors
- Fixed temperature and rate-of-rise operation using electronic thermistors with microprocessor control
- Integrated indicator provides visual indication of an alarm condition
- Test button verifies battery and alarm operation
- Loud 85 dB sounder to alert occupants
- Single DC 3 V user-replaceable battery provides up to 18 months operation under normal conditions
- 30 day low battery warning signal
- No limit for interconnectable units using the wireless transmission path
- Battery missing indicator

### Ordering Information

Part Number	Wireless Interconnect	Replaceable Battery
205-007	—	—
205-008	✓	✓
205-009	—	✓
205-010	—	—
205-011	✓	✓
205-012	—	✓





## SND-500 Smoke Alarm



SND-500 DC smoke alarms provide battery powered smoke detection and alarm functions within a single unit. Advanced electronics in conjunction with a photoelectric smoke sensing chamber provide early detection of fire and high immunity against unwanted alarms. The SND-500 is interconnectable with either a wired or wireless transmission path. SND-500 DC smoke alarms are battery powered, do not require a mains supply, and are suitable for general residential applications.

- Photoelectric smoke sensing chamber technology
- Integrated indicator provides visual indication of an alarm condition
- Test and Hush features in a single button
- Loud 85 dB sounder to alert occupants
- Single DC 9 V user-replaceable battery provides up to 18 months operation under normal conditions
- 30 day low battery warning signal
- Up to 38 units interconnectable
- Battery missing indicator

### Ordering Information

Part Number	Wired Interconnect	Wireless Interconnect
SND-500-S	—	—
SND-500-SI	✓	—

## 203 Smoke Alarm



203 AC/DC smoke alarms provide smoke detection and alarm functions within a single unit. Advanced electronics in conjunction with a photoelectric smoke sensing chamber provide early detection of fire and high immunity against unwanted alarms. 203 AC/DC smoke alarms are available as mains powered with battery backup, or battery-only models, and are suitable for general residential applications. The 203 AC/DC smoke alarm range provides home owners and installers with an easy-to-install, economical solution for life safety and property protection applications.

- Photoelectric smoke sensor
- Integrated indicator provides visual indication of an alarm condition
- Test and Hush features in a single button
- Loud 85 dB sounder to alert occupants
- Single DC 9 V user-replaceable battery
- 30 day low battery warning signal
- 10-year end-of-life timer
- Twist-on mounting base
- Interconnection function available to connect up to 38 units together
- Easy installation

### Ordering Information

Part Number	DC Power	AC (100~240) V	Interconnect
203-001	✓	—	—
203-003	✓	—	✓
203-005	✓	✓	—
203-006	✓	✓	✓

## 202 Heat Alarm



202 DC heat alarms provide battery powered smoke and heat detection, and alarm functions within a single unit. Electronic thermistor sensing and microprocessor control delivers reliable performance and low maintenance. 202 DC heat alarms are battery powered, do not require a mains supply, and are suitable for residential applications where smoke or gas detectors may cause unwanted alarms (such as cooking areas or parking garages).

- Fixed temperature and rate-of-rise operation using electronic thermistors with microprocessor control
- Integrated indicator provides visual indication of an alarm condition
- Test button verifies battery and alarm operation
- Loud 85 dB sounder to alert occupants
- Surface-mount device (SMD) circuit board design
- Single DC 9 V user-replaceable battery provides up to 18 months operation under normal conditions
- 30 day low battery warning signal
- No limit for interconnectable units using the wireless transmission path
- Battery missing indicator

### Ordering Information

Part Number	Wired Interconnect	Wireless Interconnect
202-003	—	—
202-004	✓	—
202-009	—	✓

## 204 Water Leakage Alarm



The 204 water alarm is a water leakage detector with an alarm sounder. Advanced electronics provides rapid detection of water in at-risk locations, such as sumps, under sinks, around washing machines, in bathrooms, etc. The 204 is powered from an internal battery. A dry-contact alarm relay output is available for connection to other equipment, such as a security system.

- Operates in water depths exceeding 2 mm
- Operates from a replaceable DC 9 V battery
- Low power consumption
- Loud 85 dB internal alarm sounder lasts for up to 72 hours
- Sounder will reset automatically when water is no longer detected
- Dry-contact relay output model available
- Interconnection function available to connect up to 38 units together
- Shock resistant from up to 1.8 m fall onto concrete
- Splash proof (not water proof)

### Ordering Information

Part Number	Interconnect	Relay Output
204-001	—	—
204-003	✓	—
204-005	—	✓

## 202 Smoke/Heat Alarm



202 DC smoke/heat alarms provide battery powered smoke and heat detection, and alarm functions within a single unit. Advanced electronics in conjunction with a photoelectric smoke sensing chamber and sensitive heat detection provide early detection of fire and high immunity against unwanted alarms.

- Photoelectric smoke and heat sensors
- Fixed temperature and rate-of-rise operation using electronic thermistors with microprocessor control
- Integrated indicator provides visual indication of an alarm condition
- Test button verifies battery and alarm operation
- Loud 85 dB sounder to alert occupants
- Single DC 9 V user-replaceable battery provides up to 18 months operation under normal conditions
- 30 day low battery warning signal
- No limit for interconnectable units using the wireless transmission path
- Battery missing indicator

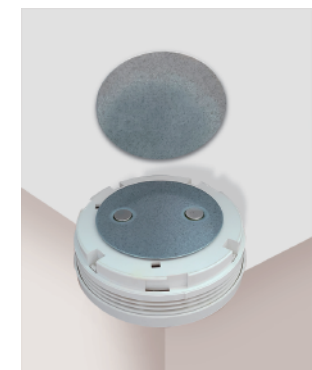
### Ordering Information

Part Number	Wired Interconnect	Wireless Interconnect
202-001	—	—
202-002	✓	—
202-015	—	✓

## 283 Magnetic Stick-up



The 283 magnetic stick-up provides a simpler installation method for Residential alarms. Strong and reliable 3M glue to stick the two pieces on the ceiling and the detector respectively, then rely on the magnetic force to attach the alarm. The 283 magnetic stick-up provides installation personnel with a much more easy way installing alarms, eliminates the hassle of drilling holes in the ceiling and installing screws.



### Ordering Information

283-001

## 206 Propane/Natural/CO Gas Alarm



206 AC plug-in gas alarms are state-of-the-art inflammable gas detectors, with spoken voice warning messages.

Advanced electronics in conjunction with a semiconductor gas sensor provides early detection of propane (LPG) gas, with high immunity against unwanted alarms.

Models are available with wireless interconnection to create a local network of devices.

Models are available that include Wi-Fi connection to an internet access point as part of a smart-home solution. Some models include both wireless interconnection and Wi-Fi connection.

- Japanese Figaro gas sensor (UL approved)
- Voice messages alert building occupants
- Displays gas concentration levels as LEL percentage
- High immunity against unwanted alarms
- Loud 85 dB internal voice alarm sounder
- Wireless interconnection available on some models to create a local network of devices
- Wi-Fi connection to wireless access point and smart home application available on some models
- Wireless and Wi-Fi available on some models
- AC plug-in mains power
- Low power consumption
- Attractive housing design
- Easy installation. No programming required
- Low maintenance



### Ordering Information

Part Number	Wireless Interconnection	Wi-Fi
206-001/206-005/206-009	—	—
206-002/206-006/206-010	✓	—
206-003/206-007/206-011	—	✓
206-004/206-008/206-012	✓	✓

"206-001"~"206-004" : Propane Gas Alarm (C<sub>3</sub>H<sub>8</sub>)

"206-005"~"206-008" : Natural Gas Alarm (CH<sub>4</sub>)

"206-009"~"206-012" : CO Gas Alarm

## 200/201 CO/Propane/Natural Gas Alarm



200/210 series gas alarms are state-of-the-art inflammable gas detectors with an internal sounder. Advanced electronics in conjunction with a semiconductor gas sensor provide early detection of natural gas, with high immunity against unwanted alarms.

Models are available powered by either an AC/DC adaptor or an external DC supply (such as a security system).

The 200/210 series gas alarm range provides home owners and installers with an easy-to-install, economical solution for life safety and property protection applications.

- Japanese Figaro electrochemical sensor (UL approved)
- Loud 85 dB internal alarm sounder
- Dual action button for Hush and Test
- Separate indicators for Power, Alarm and Service
- N/C or N/O alarm relay output models available
- Interconnection function available on some models to connect up to 20 units together
- AC mains powered models available
- DC models available, including 10-year lithium battery models
- Low power consumption



### Ordering Information

Part Number	DC Power	AC (100~240)V	Interconnect	Relay Output
200-001	✓	—	—	—
200-003	✓	—	✓	—
200-005	✓	—	—	—
200-007	—	✓	—	—
200-008	—	✓	✓	✓
200-009	—	✓	—	✓
201-001 /201-013	✓	—	—	—
201-002 /201-014	✓	—	✓	—
201-003 /201-015	✓	—	—	✓
201-004 /201-016	✓	—	✓	✓
201-006 /201-018	—	✓	—	—
201-008 /201-020	—	✓	✓	—
201-010 /201-022	—	✓	—	✓
201-012 /201-024	—	✓	✓	✓

"200-001~200-009" CO Gas Detector

"201-001~201-012" Propane Gas Detector(C<sub>3</sub>H<sub>8</sub>)

"201-013~201-024" Natural Gas Detector(CH<sub>4</sub>)

## 261 Remote Control



261 alarm remote control operates in conjunction with compatible Numens residential smoke alarms and heat alarms to provide test and hush functions without having direct access to the alarm device.

The alarm remote control includes a battery powered radio transmitter to send control signals to alarm devices with a compatible receiver.

The 261 alarm remote control provides home owners and installers with an easy-to-install, long-life solution for convenient operation of compatible alarm devices.

The 261 alarm remote control is ideal where access to alarm devices is difficult due to installation height, or where residents are restricted in their ability to operate the functions.

- Indicators provide visual indication of quiescent condition, alarm condition and fault condition
- Test and Hush control in a single button
- Cradle for wall mounting of the controller
- Eyelet for optional key-ring or lanyard
- Long life battery
- Attractive housing design, fits comfortable in the hand
- Low maintenance

### Ordering Information

261-001

## 220 wireless interconnect output module



The 220 output module connects wirelessly to compatible smoke, gas and heat alarms, and provides an extended alarm output function to external ancillary equipment.

The output is provided by a low-power magnetic latching relay. A control provides a hush and test function. Indicators display alarm and fault conditions.

220 wireless interconnect output modules are powered by a replaceable long-life replaceable lithium-ion battery, and do not require external power.

The 220 range of wireless interconnect output modules provide residential occupants with an economical way to activate ancillary equipment in response to an alarm condition.

- Wireless interconnection to smoke, heat and gas alarms
- Configurable as part of a local network of interconnected devices
- Replaceable battery provides up to 5 years operation under normal conditions
- Output is activated when Alarm condition is received from connected devices
- Model available with voltage-free relay contact output
- Model available with pulsed voltage output
- Alarm condition indicator
- Fault condition indicator for detected output relay, Group communication and internal component failures
- Hush/Test function button
- Resettable when connected detection devices reset
- Suitable for outdoor use
- Easy installation
- Low maintenance

### Ordering Information

Part Number	Voltage-free Output	Pulsed Voltage Output
220-001	✓	—
220-002	—	✓

## 110 Alarm Gateway



Numens 110-002 AC Plug-In Alarm Gateway offers home owners and installers an easy-to-install smart solution for life safety and property protection applications

The 110 alarm gateway adopts wireless interconnection to create a local device network. When configured as a network, the signals released by the primary device are replicated by the interconnecting devices.

The 110 Alarm Gateway can be connected to an internet access point as part of a smart home solution.

- Voice messages alerts building occupants
- High immunity against unwanted alarms
- Loud 85 dB internal voice alarm sounder
- Wireless interconnection available to create a local network of devices
- Wi-Fi connection to wireless access point and smart home application
- Wireless and Wi-Fi available
- AC plug-in mains power
- Low power consumption
- Attractive housing design
- Easy installation. No programming required
- Low maintenance

### Ordering Information

110-001



# Detector Test Tools



## 300-002 Smoke/Heat Detector Tester



Numens 300-002 detector tester range provides in-situ testing of smoke, heat, gas and flame detectors. Smoke detectors are tested using chemically generated aerosol artificial smoke. Heat detectors are tested using a heat source from internal batteries. 300-002 detector testers may be extended up to a maximum 2.5 m reach. The 300-002 detector tester provides installation, commissioning and maintenance personnel with an easy-to-use tool to test a broad range of fire detectors.

- Simulated smoke generated by atomization of aerosol fluid
- Heat generated from rechargeable batteries
- Rechargeable battery and battery charger included
- Extension rods provide additional reach for high detectors
- Housed in strong, light-weight aluminium case
- Easy to use
- Low maintenance

Ordering Information  
300-002

## 300 Detector Head Removal Tool



300-001 detector head removal tool provides fire detection and alarm system installation and maintenance personnel with a tool to remove and reinstall detectors that are out-of-reach from normally occupied areas. A long 3.2 m reach made from lightweight aircraft aluminium makes the 300 001 detector head removal tool easy and convenient to use. The flashlight (powered separately) illuminates the poorly lit areas.

- Rechargeable battery powered electrical detector head clasp
- Optional clasp pins and cradle depth adjustment
- Optional extension rods
- Optional flashlight
- Long life battery
- Low maintenance

Ordering Information  
300-001

## 300-005 Smoke/Heat/Gas/Flame Detector Tester



Numens 300 detector tester range provides in-situ testing of smoke, heat, gas and flame detectors. Smoke detectors are tested using chemically generated aerosol artificial smoke. Heat detectors are tested using a heat source from either internal batteries or butane flame. Gas detectors are tested using butane gas. Flame detectors are tested using a butane gas flame. Depending on the model, 300 detector testers may be extended up to a maximum 5.28 m reach. To reduce testing time, an optional infrared transceiver automatically starts the test media when the media discharge nozzle is close to the detector mounting surface. The 300 detector tester provides installation, commissioning and maintenance personnel with an easy-to-use tool to test a broad range of fire detectors.

- Simulated smoke generated by atomization of aerosol fluid
- Heat generated from rechargeable batteries
- Heat for high operating temperature heat detectors available from butane flame source
- Butane (C4H10) gas used as test source for gas detectors
- Separate infrared filter window used for infrared flame detectors
- Separate ultraviolet filter window used for ultraviolet flame detectors
- Separate window used for UV/IR flame detectors
- Rechargeable battery and battery charger included
- Extension rods provide additional reach for high detectors
- Housed in strong, light-weight aluminium case
- Easy to use
- Low maintenance

Ordering Information  
300-005

## 300-006 Smoke Detector Tester



Numens 300 smoke detector tester provides in-situ testing of smoke detectors. Smoke detectors are tested using chemically generated aerosol artificial smoke. 300-006 detector testers may be extended up to a maximum 2.5 m reach by extension rod. The 300-006 detector tester provides installation, commissioning and maintenance personnel with an easy-to-use tool to test a broad range of fire detectors.

- Simulated smoke generated by atomization of aerosol fluid
- Rechargeable battery and battery charger included
- Extension rods provide additional reach for high detectors
- Housed in strong, light-weight aluminium case
- Easy to use
- Low maintenance

Ordering Information  
300-006

## 300-009 Mini Detector Tester



Numens 300-009 mini detector tester provides in-situ testing of smoke, heat, gas and flame detectors. Smoke detectors are tested using chemically generated aerosol artificial smoke. Heat detectors are tested using a heat source from internal batteries. 300-009 detector testers may be extended up to a maximum 2.2 m reach. The 300-009 detector tester provides installation, commissioning and maintenance personnel with an easy-to-use tool to test a broad range of fire detectors.

- Simulated smoke generated by atomization of aerosol fluid
- Heat generated from rechargeable batteries
- Rechargeable battery and battery charger included
- Telescopic poles provide additional reach for high detectors
- Housed in strong, lightweight nylon fabric case
- Easy to use
- Low maintenance

Ordering Information  
300-009

# Products Index

SKU	Description	Page
110-001	Wireless smart gateway, AC/DC adaptor	36
200-001	CO gas alarm, 9V	35
200-003	CO gas alarm, 9V, interconnect	35
200-005	CO gas alarm, 9V, relay output	35
200-007	CO gas alarm, AC/DC adaptor	35
200-008	CO gas alarm, AC/DC adaptor, interconnect	35
200-009	CO gas alarm, AC/DC adaptor, relay output	35
201-001	Propane gas alarm, 12/24V	35
201-002	Propane gas alarm, 12/24V, interconnect	35
201-003	Propane gas alarm, 12/24V, relay output	35
201-004	Propane gas alarm, AC/DC adaptor, interconnect	35
201-006	Propane gas alarm, AC/DC adaptor	35
201-008	Propane gas alarm, AC/DC adaptor, interconnect	35
201-010	Propane gas alarm, AC/DC adaptor, relay output	35
201-012	Propane gas alarm, AC/DC adaptor, relay output, interconnect	35
201-013	Natural gas alarm, 12/24V	35
201-014	Natural gas alarm, 12/24V, interconnect	35
201-015	Natural gas alarm, 12/24V, relay output	35
201-016	Natural gas alarm, 12/24V, relay output, interconnect	35
201-018	Natural gas alarm, AC/DC adaptor	35
201-020	Natural gas alarm, AC/DC adaptor, interconnect	35
201-022	Natural gas alarm, AC/DC adaptor, relay output	35
201-024	Natural gas alarm, 12V, relay output, interconnect	35
202-001	Smoke/heat alarm, 9V	33
202-002	Smoke/heat alarm, 9V, wire interconnect, carbon-zinc battery	33
202-003	Heat alarm, 9V, carbon-zinc battery	33
202-004	Heat alarm, 9V, wire interconnect, carbon-zinc battery	33
202-009	Heat alarm, 9V, wireless interconnect, alkaline battery	33
202-015	Smoke/heat alarm, 9V, wireless interconnect, alkaline battery	33
203-001	Smoke alarm, 9V	34
203-003	Smoke alarm, 9V, interconnect	34
203-005	Smoke alarm, 9V, 100-240V	34
203-006	Smoke alarm, 9V, 100-240V, interconnect	34
204-001	Water alarm, 9V, auto-reset	34
204-003	Water alarm, 9V, auto-reset, interconnect	34
204-005	Water alarm, 9V, auto-reset, relay output	34
205-001	Smoke alarm, non-replaceable 10-year lithium battery	31
205-002	Smoke alarm, user-replaceable 5-year lithium battery, wireless interconnect	31
205-004	Smoke alarm, non-replaceable 10-year lithium battery, top cover style 2	31
205-005	Smoke alarm, user-replaceable 5-year lithium battery, wireless interconnect, top cover style 2	31
205-007	Heat alarm, non-replaceable 10-year lithium battery	32
205-009	Heat alarm, non-replaceable 10-year lithium battery, wireless interconnect	32
205-010	Smoke/heat alarm, non-replaceable 10-year lithium battery	32
205-012	Smoke/heat alarm, non-replaceable 10-year lithium battery, wireless interconnect	32
205-014	Smoke alarm, non-replaceable 10-year lithium battery, wireless interconnect	31
205-015	Smoke alarm, non-replaceable 10-year lithium battery, wireless interconnect, top cover style 2	31
206-001	Propane gas alarm, voice, AC plug-in	35
206-002	Propane gas alarm, voice, AC plug-in, wireless interconnect	35
206-003	Propane gas alarm, voice, AC plug-in, Wi-Fi	35
206-004	Propane gas alarm, voice, AC plug-in, wireless interconnect, Wi-Fi	35
206-005	Natural gas alarm, voice, AC plug-in	35
206-006	Natural gas alarm, voice, AC plug-in, wireless interconnect	35
206-007	Natural gas alarm, voice, AC plug-in, Wi-Fi	35
206-008	Natural gas alarm, voice, AC plug-in, wireless interconnect, Wi-Fi	35
206-009	CO gas alarm, voice, AC plug-in	35
206-010	CO gas alarm, voice, AC plug-in, wireless interconnect	35
206-011	CO gas alarm, voice, AC plug-in, Wi-Fi	35
206-012	CO gas alarm, voice, AC plug-in, wireless interconnect, Wi-Fi	35
220-001	Module, single relay output, wireless interconnect	36
220-002	Module, single DC 12 V pulsed output, wireless interconnect	36
261-001	Alarm remote control, vibration alert	36
283-001	Magnetic Stick-up	34
300-001	Detector head removal tool	37
300-002	Smoke/heat detector tester	38
300-005	Smoke/heat/gas/flame detector tester	38
300-006	Smoke detector tester	37
300-009	Mini detector tester	38
4001-01	Non-addressable control and indicating equipment, 2-zone, plastic enclosure, white	21
4001-02	Non-addressable control and indicating equipment, 4-zone, plastic enclosure, white	21

SKU	Description	Page
4001-03	Non-addressable control and indicating equipment, 8-zone, plastic enclosure, white	21
4001-04	Non-addressable repeater panel, 8 detection zones, 24V	22
4001-12	Non-addressable 8-zone expansion card	21
4002-01	Non-addressable control and indicating equipment, 16-zone, plastic enclosure, white	22
4002-09	Non-addressable control and indicating equipment, 16-zone, metal enclosure, white	22
4002-10	Non-addressable control and indicating equipment, 16-zone, metal enclosure, red	22
4003-01	Non-addressable control and indicating equipment, 2-zone, metal enclosure, white	21
4003-02	Non-addressable control and indicating equipment, 4-zone, metal enclosure, white	21
4003-03	Non-addressable control and indicating equipment, 8-zone, metal enclosure, white	21
4003-04	Non-addressable control and indicating equipment, 2-zone, metal enclosure, red	21
4003-05	Non-addressable control and indicating equipment, 4-zone, metal enclosure, red	21
4003-06	Non-addressable control and indicating equipment, 8-zone, metal enclosure, red	21
4004-01	Non-addressable control and indicating equipment, LCD, 2-zone, metal enclosure, white	23
4004-02	Non-addressable control and indicating equipment, LCD, 4-zone, metal enclosure, white	23
4004-03	Non-addressable control and indicating equipment, LCD, 8-zone, metal enclosure, white	23
4004-04	Non-addressable control and indicating equipment, LCD, 16-zone, metal enclosure, white	23
4004-05	Non-addressable control and indicating equipment, LCD, 2-zone, metal enclosure, red	23
4004-06	Non-addressable control and indicating equipment, LCD, 4-zone, metal enclosure, red	23
4004-07	Non-addressable control and indicating equipment, LCD, 8-zone, metal enclosure, red	23
4004-08	Non-addressable control and indicating equipment, LCD, 16-zone, metal enclosure, red	23
4004-09	Non-addressable control and indicating equipment, 16-zone expansion panel, AC	23
400-001	Non-addressable CO gas detector, 2-wire	27
400-002	Non-addressable CO gas detector, 2-wire, remote LED output	27
400-003	Non-addressable CO gas detector, 12/24V, 4-wire, sounder, relay output	27
401-001	Non-addressable flame detector, 2-wire	27
401-002	Non-addressable flame detector, 2-wire, remote LED output	27
401-003	Non-addressable flame detector, 12/24V, 4-wire, relay output	27
401-004	Non-addressable flame detector, 12/24V, 4-wire, relay output, auto-reset	27
402-001	Non-addressable propane gas detector, 2-wire, sounder	27
402-002	Non-addressable propane gas detector, 12/24V, 4-wire, relay output, sounder	27
402-003	Non-addressable natural gas detector, 2-wire, sounder	27
402-004	Non-addressable natural gas detector, 12/24V, 4-wire, relay output, sounder	27
402-005	Non-addressable propane gas detector, 2-wire, sounder, remote LED output	27
402-006	Non-addressable natural gas detector, 2-wire, sounder, remote LED output	27
405-001	Flame detector, flame-proof, 24V, 2-wire, infrared and ultraviolet	28
407-001	Line-type smoke detector reflector	28
440-001	Alarm bell, 24V, 2-wire, 150mm	29
440-002	Alarm bell, 24V, 2-wire, 200mm	29
440-003	Alarm bell, 24V, 2-wire, 150mm, weather proof	29
440-004	Alarm bell, 24V, 2-wire, 200mm, weather proof	29
442-001	Audible alarm device, red, 24V	30
442-002	Audible alarm device, white, 24V	30
442-003	Visual alarm device, red, 24V	30
442-004	Audio/visual alarm device, red, 24V	30
447-001	Non-addressable audible alarm device, red, 102mm, 24V, red	30
447-002	Non-addressable audible alarm device, red, 102mm, 24V, red, weather-proof	30
447-003	Non-addressable visual alarm device, red, 102mm, 24V, red	30
447-004	Non-addressable visual alarm device, red, 102mm, 24V, red, weather-proof	30
447-005	Non-addressable audio/visual alarm device, red, 102mm, red, 24V	30
447-006	Non-addressable audio/visual alarm device, red, 102mm, 24V, red, weather-proof	30
460-002	Non-addressable MCP, 0/470-ohms EOL, N/O primary output, N/O secondary output, LED indicator	29
460-009	MCP weather-proof enclosure	29
463-001	Non-addressable pull station	29
481-002	Base, high profile, 5-terminal, 102mm, continuity	26

# Products Index

SKU	Description	Page
481-004	Base, high profile, 9-terminal, 102mm, continuity	26
484-001	Base, single-pole relay output, 7-terminal, 102mm	26
484-002	Base, double-pole relay output, 7-terminal, 102mm	26
487-004	Base, low profile, 3-terminal, 99mm, continuity, red	26
487-008	Base, low profile, 5-terminal, 99mm, continuity, red	26
6000-03	Configurator software	4
6001-03	Network interface card	5
6001-04	Remote LED display card, 8 indicators	6
6001-06	Addressable control and indicating equipment 1-loop expansion card	5
6001-07	Detection zone 8-relay output card	5
6001-08	Addressable repeater panel, LCD display, 24V	6
6002-01	Addressable control and indicating equipment, 2-loop, metal enclosure, cream	3
6002-02	2-loop expansion card	3
6002-11	Addressable control and indicating equipment, 2-loop, metal enclosure, red	3
6002-12	Wireless loop expansion card	9
6003-01	Graphics display software	4
6004-01	Addressable control and indicating equipment, 1-loop, metal enclosure	3
6004-02	Addressable control and indicating equipment, 1-loop expandable, metal enclosure	3
6004-03	Addressable control and indicating equipment, 2-loop, metal enclosure	3
6005-01	Extinguishant releasing panel	18
6005-02	Extinguishant releasing panel auto/manual key-switch control	20
6005-03	Extinguishant releasing panel manual release control	19
6005-04	Extinguishant releasing panel hold release on/off control	19
6005-05	Extinguishant releasing panel abort release control	19
6005-06	Extinguishant releasing panel main/reserve mode selection control	19
6005-07	Extinguishant releasing panel status indicators	20
6005-08	Extinguishant releasing panel status indicators, weatherproof	20
6005-09	Extinguishant releasing panel controls and indicators	20
6005-10	Extinguishant releasing panel controls and indicators, weatherproof	20
6005-11	Extinguishant releasing panel ancillary output panel	20
603-001	Addressable smoke/heat detector, wireless transmission path	7
603-002	Addressable smoke detector, wireless transmission path	7
603-003	Addressable heat detector, wireless transmission path	7
620-001	Module, mini, single detector input	16
620-002	Module, mini, single contact input	16
620-003	Module, mini, single output	16
621-001	Module, single input, multi-state	15
621-002	Module, single input/output	15
621-003	Module, zone input	15
621-004	Module, zone input, external 24V	15
621-005	Module, single input, multi-state, isolator	15
621-006	Module, single input/output, isolator	15
621-007	Module, single input, switched external 24V	15
622-001	Module, non-addressable A/V device controller	15
623-001	Module, GSM	6
625-001	Module, single input/output, wireless transmission path	9
640-001	Addressable audible alarm device, red	14
640-002	Addressable audible alarm device, white	14
640-003	Addressable visual alarm device, red	14
640-004	Addressable audio/visual alarm device, red	14
641-001	Addressable audible alarm device, red, 102mm, 24V, red	14
641-002	Addressable audible alarm device, red, 102mm, 24V, red, weather-proof	14
641-003	Addressable visual alarm device, red, 102mm, 24V, red	14
641-004	Addressable visual alarm device, red, 102mm, 24V, red, weather-proof	14
641-005	Addressable audio/visual alarm device, red, 102mm, red, 24V	14
641-006	Addressable audio/visual alarm device, red, 102mm, 24V, red, weather-proof	14
642-001	Addressable audible alarm device, red, wireless transmission path	8
642-002	Addressable audible alarm device, red, wireless transmission path, weatherproof	8
642-003	Addressable visual alarm device, red, wireless transmission path	8
642-004	Addressable visual alarm device, red, wireless transmission path, weatherproof	8
642-005	Addressable audio/visual alarm device, red, wireless transmission path	8
642-006	Addressable audio/visual alarm device, red, wireless transmission path, weatherproof	8
660-001	Addressable manual call point	13
660-005	Addressable manual call point, isolator	13
660-006	Addressable manual call point, wireless transmission path	8
680-001	Addressable loop isolator	13
681-001	Remote indicator	13
683-001	Addressable audible alarm base, 102mm, non-addr detector	12
683-002	Addressable audible alarm base, 102mm, isolator, non-addr detector	12
683-003	Addressable visual alarm base, 102mm, non-addr detector	12
683-004	Addressable visual alarm base, 102mm, isolator, non-addr detector	12

SKU	Description	Page
683-005	Addressable audio/visual alarm base, 102mm, non-addr detector	12
683-006	Addressable audio/visual alarm base, 102mm, isolator, non-addr detector	12
683-007	Addressable audible alarm base, 102mm, addr detector	12
683-008	Addressable audible alarm base, 102mm, isolator, addr detector	12
683-009	Addressable visual alarm base, 102mm, addr detector	12
683-010	Addressable visual alarm base, 102mm, isolator, addr detector	12
683-011	Addressable audio/visual alarm base, 102mm, addr detector	12
683-012	Addressable audio/visual alarm base, 102mm, isolator, addr detector	12
683-013	Addressable audio/visual alarm base cover, 102mm, transparent	12
683-014	Addressable audio/visual alarm base cover, 102mm, white	12
684-001	Device manager	13
685-001	Wi-Fi interface	6
685-002	Wireless node	9
CN3021	Base, low profile, 5-terminal, 102mm, UL-approved	26
CN3023	Base, low profile, 5-terminal, 102mm	26
CN302A	Base, low profile, 4-terminal, 102mm	12
CN3041	Base, low profile, 9-terminal, 102mm, UL-approved	26
CN3043	Base, low profile, 9-terminal, 102mm	26
CN304A	Base, low profile, 8-terminal, 102mm	12
HNA-360-H2	Addressable heat detector	11
HNA-360-HL	Addressable heat detector, remote LED output	11
HNC-310-H2	Non-addressable heat detector, 2-wire	25
HNC-310-H2-U	Non-addressable heat detector, 2-wire, UL-approved	25
HNC-310-HA	Non-addressable heat detector, 12/24V, 4-wire, auto-reset	25
HNC-310-HL	Non-addressable heat detector, 2-wire, remote LED output	25
HNC-310-HL-U	Non-addressable heat detector, 2-wire, remote LED output, UL-approved	25
HNC-310-HR	Non-addressable heat detector, 12/24V, 4-wire, relay output	25
HNC-310-HR4	Non-addressable heat detector, 12/24/48V, 4-wire, relay output	25
HNC-310-HRR	Non-addressable heat detector, (10-60)V, 4-wire, relay base output	25
SNA-360-C2	Addressable smoke/heat detector	11
SNA-360-CL	Addressable smoke/heat detector, remote LED output	11
SNA-360-S2	Addressable smoke detector	11
SNA-360-SL	Addressable smoke detector, remote LED output	11
SNC-300-C2	Non-addressable smoke/heat detector	25
SNC-300-C2-U	Non-addressable smoke/heat detector, UL-approved	25
SNC-300-CA	Non-addressable smoke/heat detector, 12/24V, 4-wire, auto-reset	25
SNC-300-CL	Non-addressable smoke/heat detector, remote LED output	25
SNC-300-CL-U	Non-addressable smoke/heat detector, remote LED output, UL-approved	25
SNC-300-CR	Non-addressable smoke/heat detector, 12/24V, 4-wire, relay output	25
SNC-300-CR4	Non-addressable smoke/heat detector, 48V, 4-wire, relay output	25
SNC-300-CRR	Non-addressable smoke/heat detector, (10-60)V, 4-wire, relay base output	25
SNC-300-CR-U	Non-addressable smoke/heat detector, 12/24V, 4-wire, relay output, UL-approved	25
SNC-300-S2	Non-addressable smoke detector	25
SNC-300-S2-U	Non-addressable smoke detector, UL-approved	25
SNC-300-SA	Non-addressable smoke detector, 12/24V, 4-wire, auto-reset	25
SNC-300-SL	Non-addressable smoke detector, remote LED output	25
SNC-300-SL-U	Non-addressable smoke detector, remote LED output, UL-approved	25
SNC-300-SR	Non-addressable smoke detector, 12/24V, 4-wire, relay output	25
SNC-300-SR4	Non-addressable smoke detector, 48V, 4-wire, relay output	25
SNC-300-SRR	Non-addressable smoke detector, 12/24V, 4-wire, relay base output	25
SNC-300-SR-U	Non-addressable smoke detector, 12/24V, 4-wire, relay output, UL-approved	25
SND-500-S	Smoke alarm, 9V, sounder, carbon-zinc battery	33
SND-500-SI	Smoke alarm, 9V, sounder, wire interconnect, carbon-zinc battery	33